

## STAT3 Monoclonal Antibody

**Catalog No.** E-AB-70314

*Note:* Centrifuge before opening to ensure complete recovery of vial contents.

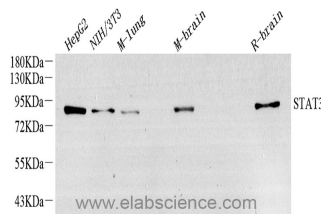
### Description

<b>Reactivity</b>	Human, Mouse, Rat
<b>Immunogen</b>	Recombinant protein corresponding to Mouse Stat3
<b>Host</b>	Mouse
<b>Isotype</b>	IgG
<b>Clone</b>	4B2C9-3
<b>Purification</b>	Affinity purification
<b>Conjugation</b>	Unconjugated
<b>Buffer</b>	PBS with 0.02% sodium azide, 1% protective protein and 50% glycerol, pH7.4

### Applications Recommended Dilution

<b>WB</b>	1:1000-1:3000
-----------	---------------

### Data



Western Blot analysis of various samples using STAT3 Monoclonal Antibody at dilution of 1:1500.

**Observed Mw:90kDa**  
**Calculated Mw:90kDa**

### Preparation & Storage

<b>Storage</b>	Store at -20°C. Avoid freeze / thaw cycles.
----------------	---

### Background

Transcription factor that binds to the interleukin-6 (IL-6)-responsive elements identified in the promoters of various acute-phase protein genes. Activated by IL31 through IL31RA.

### For Research Use Only