

STAT3 Monoclonal Antibody

Catalog Number:E-AB-70314



Note: Centrifuge before opening to ensure complete recovery of vial contents.

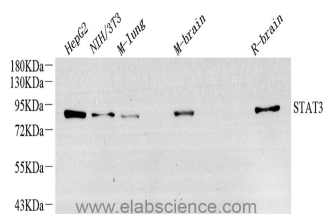
Description

Reactivity	Human,Mouse,Rat
Immunogen	Recombinant protein corresponding to Mouse Stat3
Host	Mouse
Isotype	IgG
Clone	4B2C9-3
Purification	Affinity purification
Conjugation	Unconjugated
Formulation	PBS with 0.02% sodium azide, 1% protective protein and 50% glycerol, pH7.4

Applications Recommended Dilution

WB	1:1000-1:3000
-----------	---------------

Data



Western Blot analysis of various samples using STAT3
Monoclonal Antibody at dilution of 1:1500.

Observed Mw:90kDa
Calculated Mw:90kDa

Preparation & Storage

Storage Store at -20°C. Avoid freeze / thaw cycles.

Background

Transcription factor that binds to the interleukin-6 (IL-6)-responsive elements identified in the promoters of various acute-phase protein genes. Activated by IL31 through IL31RA.

For Research Use Only

A Reliable Research Partner in Life Science and Medicine

Toll-free: 1-888-852-8623

Web: www.elabscience.com

Tel: 1-832-243-6086

Email: techsupport@elabscience.com

Fax: 1-832-243-6017