

## MYL2 Polyclonal Antibody

**Catalog No.** E-AB-70328

**Note:** Centrifuge before opening to ensure complete recovery of vial contents.

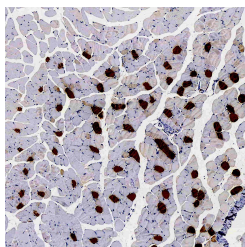
### Description

<b>Reactivity</b>	Mouse,Rat
<b>Immunogen</b>	KLH conjugated Synthetic peptide corresponding to Mouse MYL2
<b>Host</b>	Rabbit
<b>Isotype</b>	IgG
<b>Purification</b>	Affinity purification
<b>Conjugation</b>	Unconjugated
<b>Buffer</b>	PBS with 0.02% sodium azide, 1% protective protein and 50% glycerol, pH7.4

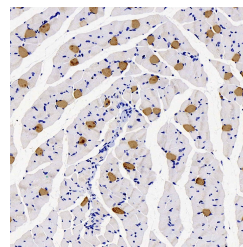
### Applications Recommended Dilution

**IHC** 1:200-1:800

### Data



Immunohistochemistry analysis of paraffin-embedded Mouse muscle using MYL2 Polyclonal Antibody at dilution of 1:300.



Immunohistochemistry analysis of paraffin-embedded rat muscle using MYL2 Polyclonal Antibody at dilution of 1:300.

### Preparation & Storage

**Storage** Store at -20°C. Avoid freeze / thaw cycles.

### Background

MYL2, also named as MLC-2v and MLC-2, is ventricular/cardiac muscle isoform. Defects in MYL2 are the cause of cardiomyopathy familial hypertrophic type 10 (CMH10). Defects in MYL2 are the cause of cardiomyopathy familial hypertrophic with mid-left ventricular chamber type 2 (MVC2). MYL2 has been widely used as a marker of mature ventricular cardiomyocytes.

### For Research Use Only