

Note: Centrifuge before opening to ensure complete recovery of vial contents.

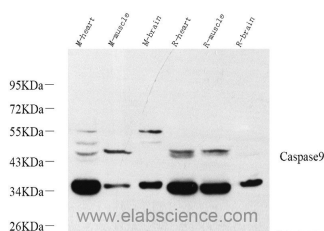
Description

Reactivity	Mouse,Rat
Immunogen	Recombinant protein corresponding to Mouse Caspase9
Host	Rabbit
Isotype	IgG
Purification	Affinity purification
Conjugation	Unconjugated
Formulation	PBS with 0.02% sodium azide, 1% protective protein and 50% glycerol, pH7.4

Applications Recommended Dilution

WB	1:500-1:2000
-----------	--------------

Data



Western Blot analysis of various samples using CASP9 Polyclonal Antibody at dilution of 1:1000.

Observed Mw:35/46kDa
Calculated Mw:35/46kDa

Preparation & Storage

Storage Store at -20°C. Avoid freeze / thaw cycles.

Background

Caspase 9,apoptosis-related cysteine protease (CASP9,synonyms: MCH6,APAF3,APAF-3,ICE-LAP6,CASPASE-9c)is a member of the cysteine-aspartic acid protease (caspase) family. Sequential activation of caspases plays a central role in the execution-phase of cell apoptosis. Caspases exist as inactive proenzymes which undergo proteolytic processing at conserved aspartic residues to produce 2 subunits,large and small,that dimerize to form the active enzyme. Caspase 9 is processed by caspase APAF1; this step is thought to be one of the earliest in the caspase activation cascade.

For Research Use Only

A Reliable Research Partner in Life Science and Medicine

Toll-free: 1-888-852-8623

Web: www.elabscience.com

Tel: 1-832-243-6086

Email: techsupport@elabscience.com

Fax: 1-832-243-6017