

CD34 Polyclonal Antibody

Catalog Number:E-AB-70337



Note: Centrifuge before opening to ensure complete recovery of vial contents.

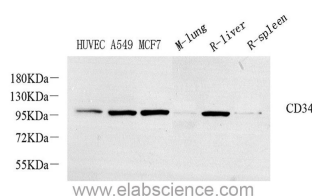
Description

Reactivity	Human,Mouse,Rat
Immunogen	Recombinant protein corresponding to Mouse CD34
Host	Rabbit
Isotype	IgG
Purification	Affinity purification
Conjugation	Unconjugated
Formulation	PBS with 0.02% sodium azide, 1% protective protein and 50% glycerol, pH7.4

Applications Recommended Dilution

WB	1:500-1:2000
-----------	--------------

Data



Western Blot analysis of various samples using CD34 Polyclonal Antibody at dilution of 1:800.

Observed Mw:105-120kDa

Calculated Mw:41kDa

Preparation & Storage

Storage Store at -20°C. Avoid freeze / thaw cycles.

Background

CD34 is a surface glycoprophosphoprotein expressed on developmentally early lymphohematopoietic stem and progenitor cells with a molecular weight of about 105-120 kD. It is selectively expressed on the majority of hematopoietic stem/progenitor cells, bone marrow stromal cells, capillary endothelial cells, embryonic fibroblasts, and some nerve tissue. CD34 is a commonly used marker for identifying human hematopoietic stem/progenitor cells and mediates cell adhesion and lymphocyte homing by binding L-selectin and E-selectin ligands. CD34 is also one of the best negative selection markers for characterizing and/or isolating human MSCs from bone marrow and other sources. Along with other positive selection markers (such as CD29, CD44, CD90, CD105 and CD166), negative selection markers (such as CD34 and CD45) are used for MSC identification.

For Research Use Only

A Reliable Research Partner in Life Science and Medicine

Toll-free: 1-888-852-8623

Web: www.elabscience.com

Tel: 1-832-243-6086

Email: techsupport@elabscience.com

Fax: 1-832-243-6017