

PERK Polyclonal Antibody

Catalog No. E-AB-70363

Note: Centrifuge before opening to ensure complete recovery of vial contents.

Description

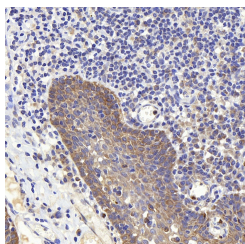
Reactivity	Human
Immunogen	KLH conjugated Synthetic peptide corresponding to Human PERK
Host	Rabbit
Isotype	IgG
Purification	Affinity purification
Conjugation	Unconjugated
Buffer	PBS with 0.02% sodium azide, 1% protective protein and 50% glycerol, pH7.4

Applications

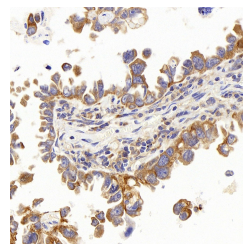
Recommended Dilution

IHC 1:400-1000

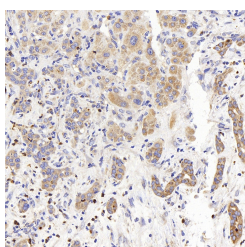
Data



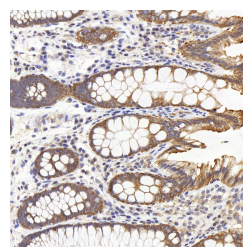
Immunohistochemistry analysis of paraffin-embedded human tonsil using PERK Polyclonal Antibody at dilution of 1:400.



Immunohistochemistry analysis of paraffin-embedded human lung cancer using PERK Polyclonal Antibody at dilution of 1:400.



Immunohistochemistry analysis of paraffin-embedded human liver cancer using PERK Polyclonal Antibody at dilution of 1:400.



Immunohistochemistry analysis of paraffin-embedded human colon using PERK Polyclonal Antibody at dilution of 1:500.

Preparation & Storage

Storage Store at -20°C. Avoid freeze / thaw cycles.

Background

The protein encoded by this gene phosphorylates the alpha subunit of eukaryotic translation-initiation factor 2 (EIF2),

For Research Use Only

leading to its inactivation, and thus to a rapid reduction of translational initiation and repression of global protein synthesis. It is a type I membrane protein located in the endoplasmic reticulum (ER), where it is induced by ER stress caused by malfolded proteins. Mutations in this gene are associated with Wolcott-Rallison syndrome.