

Note: Centrifuge before opening to ensure complete recovery of vial contents.

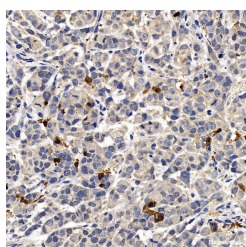
Description

Reactivity	Human,Mouse
Immunogen	KLH conjugated Synthetic peptide corresponding to Mouse caspase3
Host	Rabbit
Isotype	IgG
Purification	Affinity purification
Conjugation	Unconjugated
Formulation	PBS with 0.02% sodium azide, 1% protective protein and 50% glycerol, pH7.4

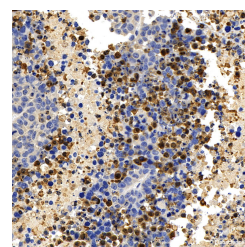
Applications Recommended Dilution

IHC	1:200-1:800
------------	-------------

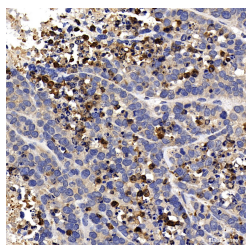
Data



Immunohistochemistry analysis of paraffin-embedded A549 in Human breast using CASP3 Polyclonal Antibody at dilution of 1:400.



Immunohistochemistry analysis of paraffin-embedded A549 in Mouse lung using CASP3 Polyclonal Antibody at dilution of 1:400.



Immunohistochemistry analysis of paraffin-embedded A549 in Mouse Subcutaneous tumor using CASP3 Polyclonal Antibody at dilution of 1:400.

Preparation & Storage

Storage Store at -20°C. Avoid freeze / thaw cycles.

Background

Caspases, a family of endoproteases, are critical players in cell regulatory networks controlling inflammation and cell death. Initiator caspases (caspase-2, -8, -9, -10, -11, and -12) cleave and activate downstream effector caspases (caspase-3, -6, and -7), which in turn execute apoptosis by cleaving targeted cellular proteins. Caspase 3 (also named CPP32, SCA-1, and Apopain) proteolytically cleaves poly(ADP-ribose) polymerase (PARP) at the beginning of apoptosis. Caspase 3 plays a key role in the activation of sterol regulatory element binding proteins (SREBPs) between the basic helix-loop-helix

For Research Use Only

A Reliable Research Partner in Life Science and Medicine

Toll-free: 1-888-852-8623

Web: www.elabscience.com

Tel: 1-832-243-6086

Email: techsupport@elabscience.com

Fax: 1-832-243-6017

CASP3 Polyclonal Antibody

Catalog Number:E-AB-70388



leucine zipper domain and the membrane attachment domain. Caspase 3 can also form heterocomplex with other proteins and performs MW of 50-70 kDa. This antibody can recognize p17, p19 and p32 of Caspase 3.

For Research Use Only

A Reliable Research Partner in Life Science and Medicine

Toll-free: 1-888-852-8623

Tel: 1-832-243-6086

Fax: 1-832-243-6017

Web: www.elabscience.com

Email: techsupport@elabscience.com