

P38 Polyclonal Antibody

Catalog No. E-AB-70001

Note: Centrifuge before opening to ensure complete recovery of vial contents.

Description

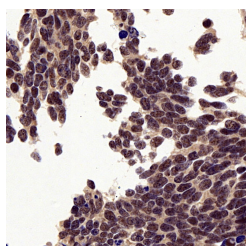
Reactivity	Human,Mouse,Rat
Immunogen	KLH conjugated Synthetic peptide corresponding to Mouse P38 MAPK
Host	Rabbit
Isotype	IgG
Purification	Affinity purification
Conjugation	Unconjugated
Buffer	PBS with 0.02% sodium azide, 1% protective protein and 50% glycerol, pH7.4

Applications

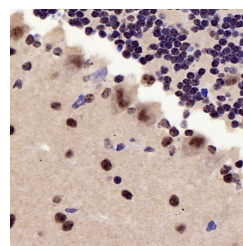
Recommended Dilution

IHC 1:500-1:2000

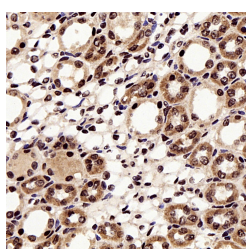
Data



Immunohistochemistry analysis of paraffin-embedded Human lung cancer using P38 Polyclonal Antibody at dilution of 1:500.



Immunohistochemistry analysis of paraffin-embedded Mouse brain using P38 Polyclonal Antibody at dilution of 1:500.



Immunohistochemistry analysis of paraffin-embedded Rat kidney using P38 Polyclonal Antibody at dilution of 1:500.

Preparation & Storage

Storage Store at -20°C. Avoid freeze / thaw cycles.

Background

MAPK14(mitogen-activated protein kinase 14) is also named as

For Research Use Only

SAPK2A,p38MAPK,CSBP1,RK,p38,EXIP,Mxi2,CSBP2,PRKM14,PRKM15,CSPB1,p38ALPHA and belongs to the MAP kinase subfamily. MAPK14-signaling is a central pathway for the integration of instructive signals in dendritic cells for T(H)17 differentiation and inflammation. It plays an important role in the regulation of hematopoietic stem cellself-renewal in vitro and inhibition of MAPK14 activation with a small molecule inhibitor may represent a novel approach to promote ex vivo expansion of hematopoietic stem cell. This protein has 4 isoforms produced by alternative splicing.

For Research Use Only