

EpCAM (Ber-EP4) Monoclonal Antibody

Catalog Number:E-AB-71007



Note: Centrifuge before opening to ensure complete recovery of vial contents.

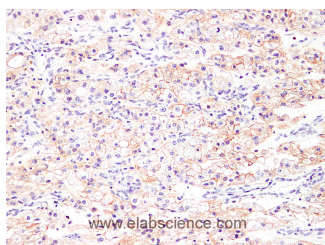
Description

Reactivity	Human
Immunogen	Full length protein from eukaryotic expression system.
Host	Mouse
Isotype	IgG
Clone	LEA15
Purification	Affinity purification
Conjugation	Unconjugated
Formulation	PBS with 0.02% sodium azide and 50% glycerol pH 7.4.

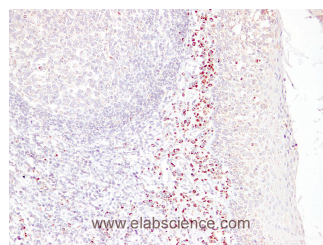
Applications Recommended Dilution

IHC 1:100-1:200

Data



Immunohistochemistry (Formalin/PFA-fixed paraffin-embedded sections) analysis of human renal clear cell carcinoma using EpCAM (Ber-EP4) Monoclonal Antibody with Cat#E-AB-71007 at dilution of 1:200.



Immunohistochemistry (Formalin/PFA-fixed paraffin-embedded sections) analysis of human tonsil tissue using with Cat#E-AB-71007 at dilution of 1:200.

Preparation & Storage

Storage Store at -20°C. Avoid freeze / thaw cycles.

Background

EPCAM is a carcinoma-associated antigen and is a member of a family that includes at least two type I membrane proteins which is expressed on most normal epithelial cells and gastrointestinal carcinomas and functions as a homotypic calcium-independent cell adhesion molecule. It is being used as a target for immunotherapy treatment of human carcinomas. Diseases associated with EPCAM include Diarrhea 5, With Tufting Enteropathy, Congenital and Colorectal Cancer, Hereditary Nonpolyposis, Type 8. Among its related pathways are Adhesion and Embryonic and Induced Pluripotent Stem Cell Differentiation Pathways and Lineage-specific Markers.

For Research Use Only

A Reliable Research Partner in Life Science and Medicine

Toll-free: 1-888-852-8623

Web: www.elabscience.com

Tel: 1-832-243-6086

Email: techsupport@elabscience.com

Fax: 1-832-243-6017