

## CD20 Monoclonal Antibody

**Catalog No.** E-AB-71028

*Note:* Centrifuge before opening to ensure complete recovery of vial contents.

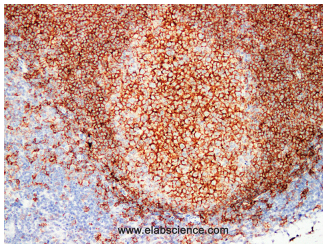
### Description

<b>Reactivity</b>	Human
<b>Immunogen</b>	Full length protein from eukaryotic expression system.
<b>Host</b>	Mouse
<b>Isotype</b>	IgG
<b>Clone</b>	LE0029
<b>Purification</b>	Affinity purification
<b>Conjugation</b>	Unconjugated
<b>Buffer</b>	PBS with 0.02% sodium azide and 50% glycerol pH 7.4.

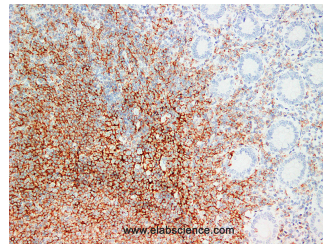
### Applications Recommended Dilution

**IHC 1:100-1:200**

### Data



Immunohistochemistry (Formalin/PFA-fixed paraffin-embedded sections) analysis of Human tonsil tissue using CD20 Monoclonal Antibody with Cat#E-AB-71028 at dilution of 1:200.



Immunohistochemistry (Formalin/PFA-fixed paraffin-embedded sections) analysis of Human appendix tissue using with Cat#E-AB-71028 at dilution of 1:200.

### Preparation & Storage

**Storage** Store at -20°C. Avoid freeze / thaw cycles.

### Background

CD20 is mainly distributed in B cells, later period of pre-B cell and B cells before plasma. CD20 has no cross-reactivity with T cells in general, and in has good cell-specificity for B cell lymphoma and chronic lymphocytic leukemia and other diseases. Therefore, CD20 is the most frequently used B cells marker in classification of malignant lymphoma, particularly for T cell or B cell lymphoma.

### For Research Use Only