

## CD45 Monoclonal Antibody

**Catalog No.** E-AB-71036

*Note:* Centrifuge before opening to ensure complete recovery of vial contents.

### Description

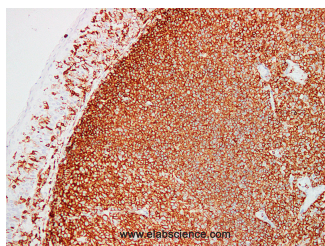
<b>Reactivity</b>	Human
<b>Immunogen</b>	Full length protein from eukaryotic expression system.
<b>Host</b>	Mouse
<b>Isotype</b>	IgG
<b>Clone</b>	LE0047
<b>Purification</b>	Affinity purification
<b>Conjugation</b>	Unconjugated
<b>Buffer</b>	PBS with 0.02% sodium azide and 50% glycerol pH 7.4.

### Applications

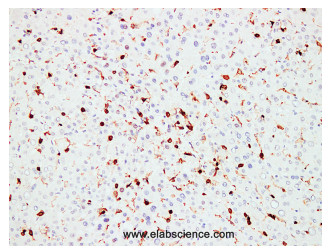
### Recommended Dilution

**IHC 1:100-1:200**

### Data



Immunohistochemistry (Formalin/PFA-fixed paraffin-embedded sections) analysis of Human tonsil tissue using CD45 Monoclonal Antibody with Cat#E-AB-71036 at dilution of 1:200.



Immunohistochemistry (Formalin/PFA-fixed paraffin-embedded sections) analysis of Human liver tissue using with Cat#E-AB-71036 at dilution of 1:200.

### Preparation & Storage

**Storage** Store at -20°C. Avoid freeze / thaw cycles.

### Background

CD45, may be used in immunocytochemical methods to aid in the identification of normal and abnormal cells of leukocytic lineage and as an aid in the diagnosis of anaplastic tumors. Anti-CD45, specifically binds to antigens located on the membrane of leukocytes. Staining is most consistent for lymphocytic cells with less consistent reaction in other leukocytes (macrophages/ histiocytes/myeloid cells).

### For Research Use Only