

## CD5 Monoclonal Antibody

**Catalog No.** E-AB-71037

*Note:* Centrifuge before opening to ensure complete recovery of vial contents.

### Description

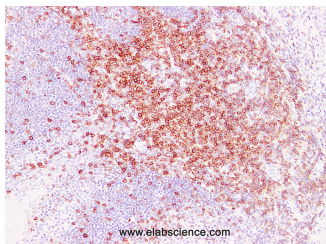
<b>Reactivity</b>	Human
<b>Immunogen</b>	Full length protein from eukaryotic expression system.
<b>Host</b>	Mouse
<b>Isotype</b>	IgG
<b>Clone</b>	LE2G1
<b>Purification</b>	Affinity purification
<b>Conjugation</b>	Unconjugated
<b>Buffer</b>	PBS with 0.02% sodium azide and 50% glycerol pH 7.4.

### Applications

### Recommended Dilution

**IHC 1:100-1:200**

### Data



Immunohistochemistry (Formalin/PFA-fixed paraffin-embedded sections) analysis of Human tonsil tissue using CD5 Monoclonal Antibody with Cat#E-AB-71037 at dilution of 1:200.

### Preparation & Storage

**Storage** Store at -20°C. Avoid freeze / thaw cycles.

### Background

CD5 is mainly distributed in the thymus cells (95%) and peripheral blood lymphocytes (72%). In normal lymph nodes, CD5 is mainly distributed in the T cell area. It is mainly used for auxiliary diagnosis of T cell leukemia and T cell lymphoma. The mantle cell lymphoma is usually positive expression of CD5, and the follicular center cell lymphoma is usually negative expression.

### For Research Use Only