

CD5 Monoclonal Antibody

Catalog No. E-AB-71037

Note: Centrifuge before opening to ensure complete recovery of vial contents.

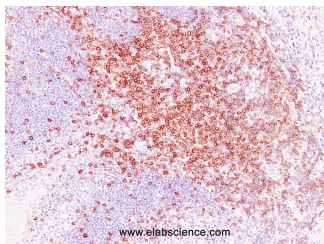
Description

Reactivity	Human
Immunogen	Full length protein from eukaryotic expression system.
Host	Mouse
Isotype	IgG
Clone	LE2G1
Purification	Affinity purification
Conjugation	Unconjugated
Formulation	PBS with 0.02% sodium azide and 50% glycerol pH 7.4.

Applications Recommended Dilution

IHC 1:100-1:200

Data



Immunohistochemistry (Formalin/PFA-fixed paraffin-embedded sections) analysis of Human tonsil tissue using CD5 Monoclonal Antibody with Cat#E-AB-71037 at dilution of 1:200.

Preparation & Storage

Storage Store at -20°C. Avoid freeze / thaw cycles.

Background

CD5 is mainly distributed in the thymus cells (95%) and peripheral blood lymphocytes (72%). In normal lymph nodes, CD5 is mainly distributed in the T cell area. It is mainly used for auxiliary diagnosis of T cell leukemia and T cell lymphoma. The mantle cell lymphoma is usually positive expression of CD5, and the follicular center cell lymphoma is usually negative expression.

For Research Use Only