

CK-15 Monoclonal Antibody

Catalog No. E-AB-71044

Note: Centrifuge before opening to ensure complete recovery of vial contents.

Description

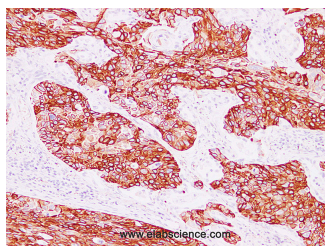
Reactivity	Human
Immunogen	Full length protein from eukaryotic expression system.
Host	Mouse
Isotype	IgG
Clone	LE5A1
Purification	Affinity purification
Conjugation	Unconjugated
Buffer	PBS with 0.02% sodium azide and 50% glycerol pH 7.4.

Applications

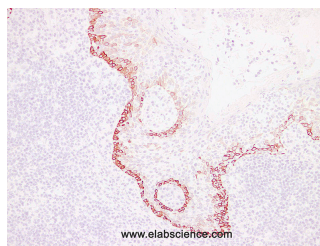
Recommended Dilution

IHC 1:100-1:200

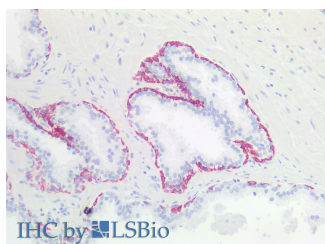
Data



Immunohistochemistry (Formalin/PFA-fixed paraffin-embedded sections) analysis of human lung squamous cell carcinoma tissue using CK-15 Monoclonal Antibody with Cat#E-AB-71044 at dilution of 1:200.



Immunohistochemistry (Formalin/PFA-fixed paraffin-embedded sections) analysis of Human tonsil tissue using with Cat#E-AB-71044 at dilution of 1:200.



Immunohistochemistry of paraffin-embedded Human prostate using CK-15 Monoclonal Antibody at dilution of 1:100 (Elabscience® Product Detected by Lifespan).

Preparation & Storage

For Research Use Only

Storage Store at -20°C. Avoid freeze / thaw cycles.

Background

Cytokeratin 15 (CK15) is mainly expressed in the basal epithelium of stratified epithelium and can be used for diagnosis of squamous cell carcinoma.