

CK-16 Monoclonal Antibody

Catalog No. E-AB-71052

Note: Centrifuge before opening to ensure complete recovery of vial contents.

Description

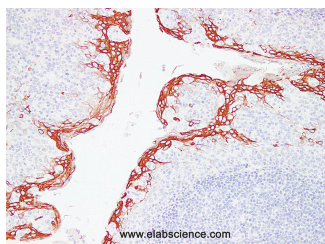
Reactivity	Human
Immunogen	Full length protein from eukaryotic expression system.
Host	Mouse
Isotype	IgG
Clone	LE5B1
Purification	Affinity purification
Conjugation	Unconjugated
Buffer	PBS with 0.02% sodium azide and 50% glycerol pH 7.4.

Applications

Recommended Dilution

IHC 1:100-1:200

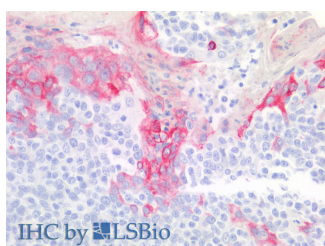
Data



Immunohistochemistry (Formalin/PFA-fixed paraffin-embedded sections) analysis of Human tonsil tissue using CK-16 Monoclonal Antibody with Cat#E-AB-71052 at dilution of 1:200.



Immunohistochemistry (Formalin/PFA-fixed paraffin-embedded sections) analysis of Human lung squamous carcinoma using with Cat#E-AB-71052 at dilution of 1:200.



Immunohistochemistry of paraffin-embedded Human tonsil using CK-16 Monoclonal Antibody at dilution of 1:100(Elabscience® Product Detected by Lifespan).

Preparation & Storage

For Research Use Only

Storage Store at -20°C. Avoid freeze / thaw cycles.

Background

KRT16 is a member of the keratin family. The keratins are intermediate filament proteins responsible for the structural integrity of epithelial cells and are subdivided into cytokeratins and hair keratins. This keratin has been coexpressed with keratin 14 in a number of epithelial tissues, including esophagus, tongue, and hair follicles. Diseases associated with KRT16 include Pachyonychia Congenita 1 and Palmoplantar Keratoderma, Nonepidermolytic, Focal. Among its related pathways are Cytoskeleton remodeling Neurofilaments and Keratinization. This antibody reacts with the 48 kDa protein corresponding to cytokeratin 16 and labels cytokeratin 16 present in Keratinized and hyperplastic squamous epithelium which can be used in the diagnosis of squamous cell carcinoma.