

## CK-19 Monoclonal Antibody

Catalog No. E-AB-71054

**Note:** Centrifuge before opening to ensure complete recovery of vial contents.

### Description

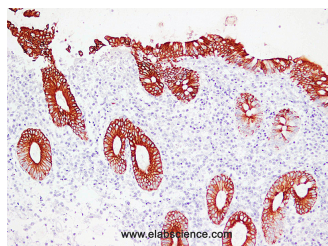
<b>Reactivity</b>	Human
<b>Immunogen</b>	Full length protein from eukaryotic expression system.
<b>Host</b>	Mouse
<b>Isotype</b>	IgG
<b>Clone</b>	LE0087
<b>Purification</b>	Affinity purification
<b>Conjugation</b>	Unconjugated
<b>Buffer</b>	PBS with 0.02% sodium azide and 50% glycerol pH 7.4.

### Applications

### Recommended Dilution

IHC 1:100-1:200

### Data



Immunohistochemistry (Formalin/PFA-fixed paraffin-embedded sections) analysis of Human appendix tissue using CK-19 Monoclonal Antibody with Cat#E-AB-71054 at dilution of 1:200.

### Preparation & Storage

**Storage** Store at -20°C. Avoid freeze / thaw cycles.

### Background

KRT19 is a member of the keratin family. The keratins are intermediate filament proteins responsible for the structural integrity of epithelial cells and are subdivided into cytokeratins and hair keratins. The type I cytokeratins consist of acidic proteins which are arranged in pairs of heterotypic keratin chains. Unlike its related family members, this smallest known acidic cytokeratin is not paired with a basic cytokeratin in epithelial cells. It is specifically expressed in the periderm, the transiently superficial layer that envelops the developing epidermis. Diseases associated with KRT19 include Anal Canal Adenocarcinoma and Thyroid Cancer. Among its related pathways are Signaling mediated by p38-alpha and p38-beta and Embryonic and Induced Pluripotent Stem Cell Differentiation Pathways and Lineage-specific Markers. This antibody reacts with the 40 kDa protein corresponding to cytokeratin 19 and labels many types of simple and non-keratinizing epithelia, including ductal and glandular epithelia. The antibody is a useful aid for classification of tumors of epithelial origin.

### For Research Use Only

---

## For Research Use Only

Toll-free: 1-888-852-8623

Web: [www.elabscience.com](http://www.elabscience.com)

Tel: 1-832-243-6086

Email: [techsupport@elabscience.com](mailto:techsupport@elabscience.com)

Fax: 1-832-243-6017