

Claudin 3 Monoclonal Antibody

Catalog No. E-AB-71062

Note: Centrifuge before opening to ensure complete recovery of vial contents.

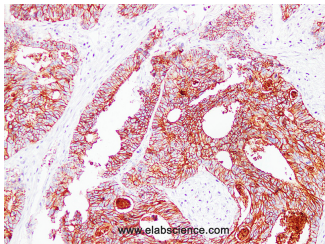
Description

Reactivity	Human
Immunogen	Full length protein from eukaryotic expression system.
Host	Mouse
Isotype	IgG
Clone	LE0111
Purification	Affinity purification
Conjugation	Unconjugated
Buffer	PBS with 0.02% sodium azide and 50% glycerol pH 7.4.

Applications Recommended Dilution

IHC 1:100-1:200

Data



Immunohistochemistry (Formalin/PFA-fixed paraffin-embedded sections) analysis of Human colon cancer tissue using Claudin 3 Monoclonal Antibody with Cat#E-AB-71062 at dilution of 1:200.

Preparation & Storage

Storage Store at -20°C. Avoid freeze / thaw cycles.

Background

CLDN3 (Claudin 3) is a Protein Coding gene. Diseases associated with CLDN3 include Ovarian Cancer and Prostate Transitional Cell Carcinoma. Among its related pathways are Blood-Brain Barrier and Immune Cell Transmigration: VCAM-1/CD106 Signaling Pathways and Cytoskeleton remodeling Regulation of actin cytoskeleton by Rho GTPases. GO annotations related to this gene include identical protein binding and structural molecule activity. An important paralog of this gene is CLDN4.

For Research Use Only