

## EMA Monoclonal Antibody

**Catalog No.** E-AB-71065

*Note:* Centrifuge before opening to ensure complete recovery of vial contents.

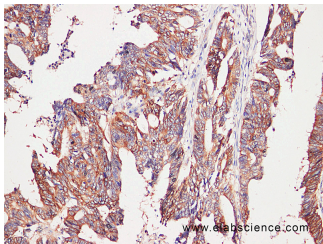
### Description

<b>Reactivity</b>	Human
<b>Immunogen</b>	Full length protein from eukaryotic expression system.
<b>Host</b>	Mouse
<b>Isotype</b>	IgG
<b>Clone</b>	LE7G1
<b>Purification</b>	Affinity purification
<b>Conjugation</b>	Unconjugated
<b>Buffer</b>	PBS with 0.02% sodium azide and 50% glycerol pH 7.4.

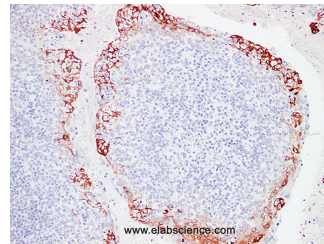
### Applications Recommended Dilution

**IHC 1:100-1:200**

### Data



Immunohistochemistry (Formalin/PFA-fixed paraffin-embedded sections) analysis of human colon cancer tissue using EMA Monoclonal Antibody with Cat#E-AB-71065 at dilution of 1:200.



Immunohistochemistry (Formalin/PFA-fixed paraffin-embedded sections) analysis of Human tonsil tissue using with Cat#E-AB-71065 at dilution of 1:200.

### Preparation & Storage

**Storage** Store at -20°C. Avoid freeze / thaw cycles.

### Background

CA15-3 is a mucin-like glycoprotein, which is mainly used for research of breast cancer and has a reference value to the diagnosis of metastatic breast cancer, and it can also be used for other malignant tumors such as lung cancer, ovarian carcinoma. CA15-3 may be expressed in a few of benign breast tumors and ovarian tumors, but it differs in positive distribution of immunohistochemistry staining, which should be paid attention to take observation and judgment.

### For Research Use Only