

EMA Monoclonal Antibody

Catalog No. E-AB-71069

Note: Centrifuge before opening to ensure complete recovery of vial contents.

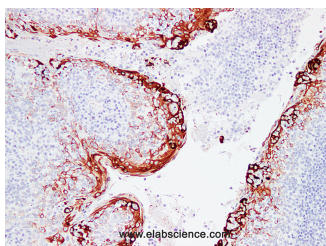
Description

Reactivity	Human
Immunogen	Full length protein from eukaryotic expression system.
Host	Mouse
Isotype	IgG
Clone	LE0132
Purification	Affinity purification
Conjugation	Unconjugated
Buffer	PBS with 50% glycerol, 0.5% BSA and 0.02% sodium azide.

Applications Recommended Dilution

IHC 1:100-1:200

Data



Immunohistochemistry (Formalin/PFA-fixed paraffin-embedded sections) analysis of Human tonsil tissue using EMA Monoclonal Antibody with Cat#E-AB-71069 at dilution of 1:200.

Preparation & Storage

Storage Store at -20°C. Avoid freeze / thaw cycles.

Background

CA15-3 is a mucin-like glycoprotein, which is mainly used for research of breast cancer and has a reference value to the diagnosis of metastatic breast cancer, and it can also be used for other malignant tumors such as lung cancer, ovarian carcinoma. CA15-3 may be expressed in a few of benign breast tumors and ovarian tumors, but it differs in positive distribution of immunohistochemistry staining, which should be paid attention to take observation and judgment.

For Research Use Only