

## Gastrin Monoclonal Antibody

**Catalog No.** E-AB-71073

*Note:* Centrifuge before opening to ensure complete recovery of vial contents.

### Description

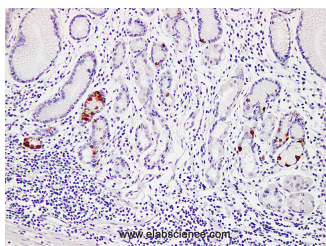
<b>Reactivity</b>	Human
<b>Immunogen</b>	Full length protein from eukaryotic expression system.
<b>Host</b>	Mouse
<b>Isotype</b>	IgG
<b>Clone</b>	LEA17
<b>Purification</b>	Affinity purification
<b>Conjugation</b>	Unconjugated
<b>Buffer</b>	PBS with 50% glycerol, 0.5% BSA and 0.02% sodium azide.

### Applications

### Recommended Dilution

**IHC 1:100-1:200**

### Data



Immunohistochemistry (Formalin/PFA-fixed paraffin-embedded sections) analysis of Human stomach tissue using Gastrin Monoclonal Antibody with Cat#E-AB-71073 at dilution of 1:200.

### Preparation & Storage

**Storage** Store at -20°C. Avoid freeze / thaw cycles.

### Background

Gastrin is a peptide hormone that is important in the regulation of gastric acid secretion and mucosal cell proliferation. This antibody labels cells producing gastrin or structural gastrin analogues.

### For Research Use Only