

MSH6 Monoclonal Antibody

Catalog No. E-AB-71082

Note: Centrifuge before opening to ensure complete recovery of vial contents.

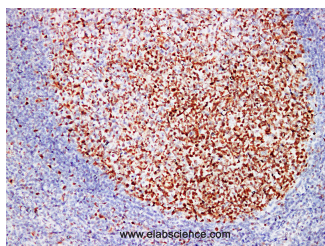
Description

Reactivity	Human
Immunogen	Full length protein from eukaryotic expression system.
Host	Mouse
Isotype	IgG
Clone	LE0169
Purification	Affinity purification
Conjugation	Unconjugated
Buffer	PBS with 0.02% sodium azide and 50% glycerol pH 7.4.

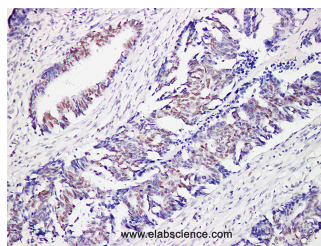
Applications Recommended Dilution

IHC 1:100-1:200

Data



Immunohistochemistry (Formalin/PFA-fixed paraffin-embedded sections) analysis of Human tonsil tissue using MSH6 Monoclonal Antibody with Cat#E-AB-71082 at dilution of 1:200.



Immunohistochemistry (Formalin/PFA-fixed paraffin-embedded sections) analysis of Human colon cancer tissue using with Cat#E-AB-71082 at dilution of 1:200.

Preparation & Storage

Storage Store at -20°C. Avoid freeze / thaw cycles.

Background

MutS protein homolog 6 (MSH6) is part of the mismatch repair (MMR) pathway which is utilized by normal proliferating cells to repair mutations that may occur during DNA replication. Antibodies to MSH6 are a useful aid for classification of tumors of the gastrointestinal tract, including associated extracolonic cancers.

For Research Use Only