

# Placental Alkaline Phosphatase Monoclonal Antibody

Catalog Number: E-AB-71090



**Note:** Centrifuge before opening to ensure complete recovery of vial contents.

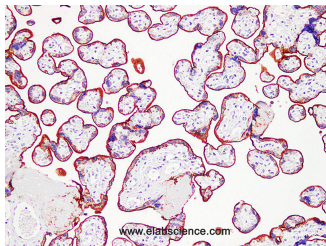
## Description

<b>Reactivity</b>	Human
<b>Immunogen</b>	Full length protein from eukaryotic expression system.
<b>Host</b>	Mouse
<b>Isotype</b>	IgG
<b>Clone</b>	LE1F2
<b>Purification</b>	Affinity purification
<b>Conjugation</b>	Unconjugated
<b>Formulation</b>	PBS with 50% glycerol, 0.5% BSA and 0.02% sodium azide.

## Applications Recommended Dilution

**IHC 1:100-1:200**

## Data



Immunohistochemistry (Formalin/PFA-fixed paraffin-embedded sections) analysis of human placenta tissue using Placental Alkaline Phosphatase Monoclonal Antibody with Cat#E-AB-71090 at dilution of 1:200.

## Preparation & Storage

**Storage** Store at -20°C. Avoid freeze / thaw cycles.

## Background

PLAP exist in the placenta and can express in ovarian germ cell tumor, testis and extragonadal germ cell tumors, including seminoma, embryonal carcinoma, gonadoblastoma, yolk sac, and choriocarcinoma, etc. But PLAP do not express in seminomatous seminoma and immature teratoma. PLAP is mainly used for differential diagnosis and auxiliary diagnosis of placental trophoblastic tumor, ovarian germ cell tumor, testis and extragonadal germ cell tumors.

## For Research Use Only

A Reliable Research Partner in Life Science and Medicine

Toll-free: 1-888-852-8623

Web: [www.elabscience.com](http://www.elabscience.com)

Tel: 1-832-243-6086

Email: [techsupport@elabscience.com](mailto:techsupport@elabscience.com)

Fax: 1-832-243-6017