

## PSA Monoclonal Antibody

**Catalog No.** E-AB-71095

*Note:* Centrifuge before opening to ensure complete recovery of vial contents.

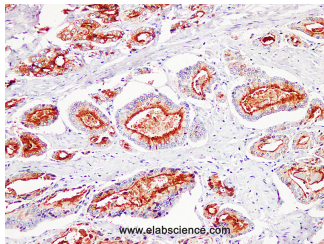
### Description

<b>Reactivity</b>	Human
<b>Immunogen</b>	Full length protein from eukaryotic expression system.
<b>Host</b>	Mouse
<b>Isotype</b>	IgG
<b>Clone</b>	LE0223
<b>Purification</b>	Affinity purification
<b>Conjugation</b>	Unconjugated
<b>Buffer</b>	PBS with 0.02% sodium azide and 50% glycerol pH 7.4.

### Applications Recommended Dilution

**IHC 1:100-1:200**

### Data



Immunohistochemistry (Formalin/PFA-fixed paraffin-embedded sections) analysis of Human prostatic cancer tissues using PSA Monoclonal Antibody with Cat#E-AB-71095 at dilution of 1:200.

### Preparation & Storage

**Storage** Store at -20°C. Avoid freeze / thaw cycles.

### Background

PSA is a glycoprotein synthesized by prostatic epithelial cells. It is considered as one of the specific tumor markers and mainly used for the diagnosis of prostate cancer and metastatic prostate cancer, but it cannot be used for differential diagnosis of benign and malignant prostatic diseases. Because most of the prostatic hyperplasia epithelium were positive.

### For Research Use Only