

## PSMA Monoclonal Antibody

**Catalog No.** E-AB-71098

*Note:* Centrifuge before opening to ensure complete recovery of vial contents.

### Description

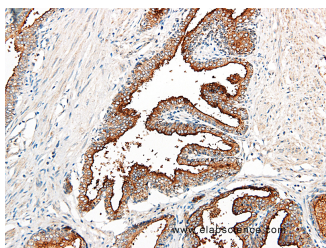
<b>Reactivity</b>	Human
<b>Immunogen</b>	Full length protein from eukaryotic expression system.
<b>Host</b>	Mouse
<b>Isotype</b>	IgG
<b>Clone</b>	LE2A2
<b>Purification</b>	Affinity purification
<b>Conjugation</b>	Unconjugated
<b>Buffer</b>	PBS with 0.02% sodium azide and 50% glycerol pH 7.4.

### Applications

### Recommended Dilution

**IHC 1:100-1:200**

### Data



Immunohistochemistry (Formalin/PFA-fixed paraffin-embedded sections) analysis of human prostate cancer tissue using PSMA Monoclonal Antibody with Cat#E-AB-71098 at dilution of 1:200.

### Preparation & Storage

**Storage** Store at -20°C. Avoid freeze / thaw cycles.

### Background

PSMA is a type II transmembrane protein with a molecular weight of 110 kDa. Its gene is located on the short arm of chromosome 11q. PSMA is expressed in normal and neoplastic prostate epithelium, and also expressed in some other tissues, such as breast, duodenum and benign epithelial cells of kidney tissue. The expression of PSMA in prostate cancer is positively related to tumor grade and the presence of hormonal resistance. It has been reported that this protein can be expressed in new vessels of non-prostate cancer, and PSMA is considered as a marker for prostate cancer.

### For Research Use Only