

**PE/Elab Fluor® 594 Anti-Human CD34 Antibody[581]**

|                    |  |                     |       |
|--------------------|--|---------------------|-------|
| <b>Catalog No.</b> | E-AB-F1143P                                | <b>Reactivity</b>   | Human |
| <b>Storage</b>     | Store at 2~8°C, Avoid freeze / thaw cycles | <b>Applications</b> | FCM   |

**Important Note:** Centrifuge before opening to ensure complete recovery of vial contents.

**Antigen Information**

|                        |  |
|------------------------|--|
| <b>Alternate Names</b> | Gp105-120, My10  |
| <b>Uniprot ID</b>      | P28906   |
| <b>Gene ID</b>         | 947  |
| <b>Background</b>      | CD34, also known as gp105-120, is a type I monomeric sialomucin-like glycoposphoprotein with an approximate molecular weight of 105-120 kD. Selectively expressed on the majority of hematopoietic stem/progenitor cells, bone marrow stromal cells, capillary endothelial cells, embryonic fibroblasts, and some nervous tissue, CD34 is a commonly used marker to identify human hematopoietic stem/progenitor cells. According to the differential sensitivity to enzymatic cleavage, four groups of epitopes of CD34 have been described. CD34 mediates cell adhesion and lymphocytes homing through binding to L-selectin and E-selectin ligands. |

**Product Details**

|                                |  |
|--------------------------------|--|
| <b>Form</b>                    | Liquid   |
| <b>Size</b>                    | 20Tests/100Tests/100Tests×2  |
| <b>Clone No.</b>               | 581  |
| <b>Host</b>                    | Mouse  |
| <b>Isotype</b>                 | Mouse IgG1, κ  |
| <b>Reactivity</b>              | Human  |
| <b>Application</b>             | FCM  |
| <b>Isotype Control</b>         | <a href="#">PE/Elab Fluor® 594 Mouse IgG1, κ Isotype Control[MOPC-21] [Product E-AB-F09792P]</a>   |
| <b>Storage Buffer</b>          | Phosphate buffered solution, pH 7.2, containing 0.09% stabilizer and 1% protein protectant.  |
| <b>Shipping</b>                | Biological ice pack at 4 °C  |
| <b>Stability &amp; Storage</b> | Keep as concentrated solution.<br>Store at 2~8°C and protected from prolonged exposure to light.Do not freeze.<br>This product is guaranteed up to one year from purchase. |

**For Research Use Only**

## Fluorophore

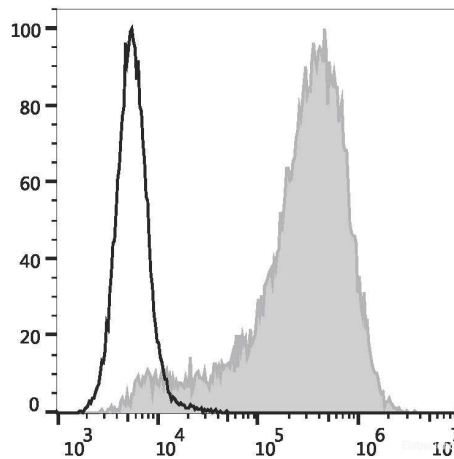
**Conjugation:** PE/Elab Fluor® 594

PE/Elab Fluor® 594 is designed to be excited by the blue (488 nm), Green (532 nm) and yellow-green (561 nm) lasers and detected using an optical filter centered near 620 nm (e.g., a 610/20 nm bandpass filter).

## Recommended usage

Each lot of this antibody is quality control tested by flow cytometric analysis. **The amount of the reagent is suggested to be used 5 µL of antibody per test (million cells in 100 µL staining volume or per 100 µL of whole blood).** Please check your vial before the experiment. Since applications vary, the appropriate dilutions must be determined for individual use.

## Product data



TF-1 cells are stained with PE/Elab Fluor® 594 Anti-Human CD34 Antibody (filled gray histogram) or PE/Elab Fluor® 594 Mouse IgG1, κ Isotype Control (empty black histogram).

## Related Information

1. Sample Preparation for Flow Cytometry <https://www.elabscience.com/List-detail-5594.html>
2. Staining Cell Surface Targets for Flow Cytometry <https://www.elabscience.com/List-detail-5568.html>
3. Flow Cytometry Troubleshooting Tips <https://www.elabscience.com/List-detail-5593.html>
4. How to select the appropriate detection channel through the spectrogram? <https://www.elabscience.com/List-detail-459742.html>