

Elab Fluor® Red 780 Anti-Rat CD4(domain 1) Antibody[OX-38]

Catalog No.	E-AB-F1105S	Reactivity	Rat
Storage	Store at 2~8°C, Avoid freeze / thaw cycles	Applications	FCM

Important Note: Centrifuge before opening to ensure complete recovery of vial contents.

Antigen Information

Alternate Names	T-cell surface glycoprotein CD4,CD4,T-cell surface antigen T4/Leu-3,CD4
Uniprot ID	P05540
Gene ID	24932
Background	CD4, also known as T4, is a 55kD glycoprotein member of the immunoglobulin superfamily and is expressed on majority of thymocytes, macrophages, and a peripheral T cell subset (T helper cells). CD4 is a T cell co-receptor that interacts with the MHC class II molecule and is involved in T cell activation.

Product Details

Form	Liquid
Size	50Tests/100Tests/100Tests×2
Clone No.	OX-38
Host	Mouse
Isotype	Mouse IgG2a, κ
Reactivity	Rat
Application	FCM
Isotype Control	Elab Fluor® Red 780 Mouse IgG2a, κ Isotype Control[C1.18.4] [Product E-AB-F09802S]
Storage Buffer	Phosphate buffered solution, pH 7.2, containing 0.09% stabilizer and 1% protein protectant.
Shipping	Biological ice pack at 4 °C
Stability & Storage	Keep as concentrated solution. Store at 2~8°C and protected from prolonged exposure to light.Do not freeze. This product is guaranteed up to one year from purchase.

For Research Use Only

Fluorophore

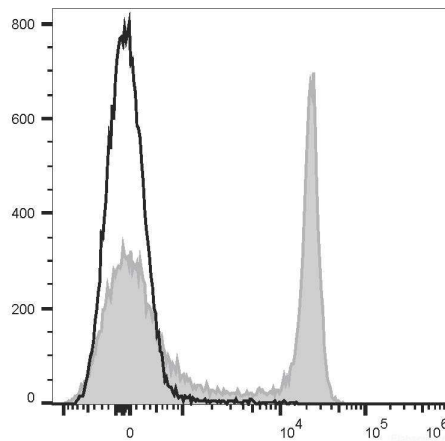
Conjugation: Elab Fluor® Red 780

Elab Fluor® Red 780 is designed to be excited by the Red (627-640 nm) laser and detected using an optical filter centered near 770 nm (e.g., a 780/60 nm bandpass filter).

Recommended usage

Each lot of this antibody is quality control tested by flow cytometric analysis. **The amount of the reagent is suggested to be used 5 µL of antibody per test (million cells in 100 µL staining volume or per 100 µL of whole blood).** Please check your vial before the experiment. Since applications vary, the appropriate dilutions must be determined for individual use.

Product data



Rat splenocytes are stained with Elab Fluor® Red 780 Anti-Rat CD4(domain 1) Antibody[OX-38] (filled gray histogram) or Elab Fluor® Red 780 Mouse IgG2a, κ Isotype Control (empty black histogram).

Related Information

1. Sample Preparation for Flow Cytometry <https://www.elabscience.com/List-detail-5594.html>
2. Staining Cell Surface Targets for Flow Cytometry <https://www.elabscience.com/List-detail-5568.html>
3. Flow Cytometry Troubleshooting Tips <https://www.elabscience.com/List-detail-5593.html>
4. How to select the appropriate detection channel through the spectrogram? <https://www.elabscience.com/List-detail-459742.html>