

## Elab Fluor® Red 780 Anti-Rat CD3 Antibody[G4.18]

<b>Catalog No.</b>	E-AB-F1228S	<b>Reactivity</b>	Rat
<b>Storage</b>	Store at 2~8°C, Avoid freeze / thaw cycles	<b>Applications</b>	FCM

**Important Note:** Centrifuge before opening to ensure complete recovery of vial contents.

### Antigen Information

<b>Alternate Names</b>	T-cell surface glycoprotein CD3 $\delta$ , $\gamma$ , $\epsilon$ , and $\zeta$ chains, CD3 Complex, T3, CD3
<b>Uniprot ID</b>	P19377, Q64159, D4A5M2
<b>Gene ID</b>	25710, 300678, 315609, 25300
<b>Background</b>	CD3 is a complex composed of $\delta$ , $\gamma$ , $\epsilon$ , and $\zeta$ chains. They are 20-25 kD members of the immunoglobulin superfamily and associated with the T cell receptor (TCR). CD3 is expressed on thymocytes, peripheral T cells, some NK-T cells, and dendritic epidermal T cells. CD3 is involved in antigen recognition, signal transduction, and T cell activation.

### Product Details

<b>Form</b>	Liquid
<b>Size</b>	50Tests/100Tests/100Tests $\times$ 2
<b>Clone No.</b>	G4.18
<b>Host</b>	Mouse
<b>Isotype</b>	Mouse IgG3, $\kappa$
<b>Reactivity</b>	Rat
<b>Application</b>	FCM
<b>Isotype Control</b>	<a href="#">Elab Fluor® Red 780 Mouse IgG3, <math>\kappa</math> Isotype Control[A112-3] [Product E-AB-F09752S]</a>
<b>Storage Buffer</b>	Phosphate buffered solution, pH 7.2, containing 0.09% stabilizer and 1% protein protectant.
<b>Shipping</b>	Biological ice pack at 4 °C
<b>Stability &amp; Storage</b>	Keep as concentrated solution. Store at 2~8°C and protected from prolonged exposure to light. Do not freeze. This product is guaranteed up to one year from purchase.

### For Research Use Only

## Fluorophore

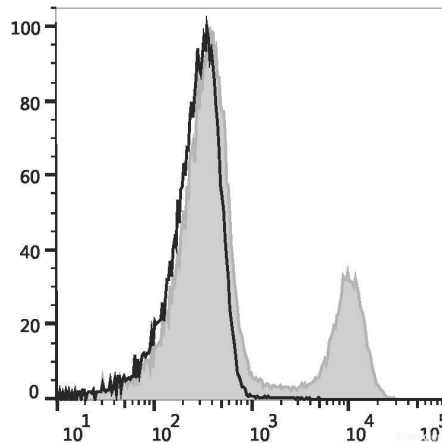
**Conjugation:** Elab Fluor® Red 780

Elab Fluor® Red 780 is designed to be excited by the Red (627-640 nm) laser and detected using an optical filter centered near 770 nm (e.g., a 780/60 nm bandpass filter).

## Recommended usage

Each lot of this antibody is quality control tested by flow cytometric analysis. **The amount of the reagent is suggested to be used 5 µL of antibody per test (million cells in 100 µL staining volume or per 100 µL of whole blood).** Please check your vial before the experiment. Since applications vary, the appropriate dilutions must be determined for individual use.

## Product data



Rat splenocytes are stained with Elab Fluor® Red 780 Anti-Rat CD3 Antibody (filled gray histogram) or Elab Fluor® Red 780 Mouse IgG3, κ Isotype Control (empty black histogram).

## Related Information

1. Sample Preparation for Flow Cytometry <https://www.elabscience.com/List-detail-5594.html>
2. Staining Cell Surface Targets for Flow Cytometry <https://www.elabscience.com/List-detail-5568.html>
3. Flow Cytometry Troubleshooting Tips <https://www.elabscience.com/List-detail-5593.html>
4. How to select the appropriate detection channel through the spectrogram? <https://www.elabscience.com/List-detail-459742.html>