

PE/Elab Fluor® 594 Anti-Mouse CD16/32 Antibody[2.4G2]

Catalog No.	E-AB-F0997P	Reactivity	Mouse
Storage	Store at 2~8°C, Avoid freeze / thaw cycles	Applications	FCM

Important Note: Centrifuge before opening to ensure complete recovery of vial contents.

Antigen Information

Alternate Names	CD16a/b,CD32,CD32A/B,Fc fragment of IgG low affinity IIa/b receptor,Fc fragment of IgG low affinity IIIa/b receptor,Fc fragment of IgG low affinity IIIb receptor,Fc gamma receptor III A/B,FCG2A,FcGR,FCGR2A/BFCGR3,FCGR3A/B,Fc gamma RIIa/b
Uniprot ID	P08508,P08101
Gene ID	14130,14131
Background	CD16 is low affinity IgG Fc receptor III (FcR III) and CD32 is FcR II. CD16/CD32 are expressed on B cells, monocytes/macrophages, NK cells, granulocytes, mast cells, and dendritic cells. The Fc receptors bind antibody-antigen immune complexes and mediate adaptive immune responses.

Product Details

Form	Liquid
Size	50Tests/100Tests/100Tests×2
Clone No.	2.4G2
Host	Rat
Isotype	Rat IgG2b, κ
Reactivity	Mouse
Application	FCM
Isotype Control	PE/Elab Fluor® 594 Rat IgG2b, κ Isotype Control[LTF-2] [Product E-AB-F09842P]
Storage Buffer	Phosphate buffered solution, pH 7.2, containing 0.09% stabilizer and 1% protein protectant.
Shipping	Biological ice pack at 4 °C
Stability & Storage	Keep as concentrated solution. Store at 2~8°C and protected from prolonged exposure to light.Do not freeze. This product is guaranteed up to one year from purchase.

For Research Use Only

Fluorophore

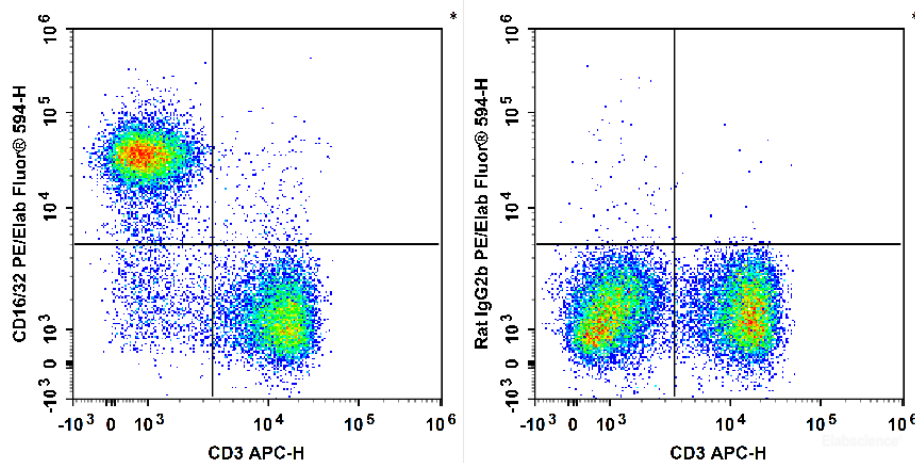
Conjugation: PE/Elab Fluor® 594

PE/Elab Fluor® 594 is designed to be excited by the blue (488 nm), Green (532 nm) and yellow-green (561 nm) lasers and detected using an optical filter centered near 620 nm (e.g., a 610/20 nm bandpass filter).

Recommended usage

Each lot of this antibody is quality control tested by flow cytometric analysis. **The amount of the reagent is suggested to be used 5 µL of antibody per test (million cells in 100 µL staining volume or per 100 µL of whole blood).** Please check your vial before the experiment. Since applications vary, the appropriate dilutions must be determined for individual use.

Product data



C57BL/6 murine splenocytes are stained with APC Anti-Mouse CD3 Antibody and PE/Elab Fluor® 594 Anti-Mouse CD16/32 Antibody[2.4G2] (Left). Splenocytes are stained with APC Anti-Mouse CD3 Antibody and PE/Elab Fluor® 594 Rat IgG2b, κ Isotype Control (Right).

Related Information

1. Sample Preparation for Flow Cytometry <https://www.elabscience.com/List-detail-5594.html>
2. Staining Cell Surface Targets for Flow Cytometry <https://www.elabscience.com/List-detail-5568.html>
3. Flow Cytometry Troubleshooting Tips <https://www.elabscience.com/List-detail-5593.html>
4. How to select the appropriate detection channel through the spectrogram? <https://www.elabscience.com/List-detail-459742.html>