

PE/Elab Fluor® 594 Anti-Mouse CD11a Antibody[FD441.8]

Catalog No.	E-AB-F1033UP	Reactivity	Mouse
Storage	Store at 2~8°C, Avoid freeze / thaw cycles	Applications	FCM

Important Note: Centrifuge before opening to ensure complete recovery of vial contents.

Antigen Information

Alternate Names	Integrin alpha-L, Itgal, CD11 antigen-like family member A, LFA-1A, Lymphocyte antigen 15, Ly-15, CD11a
Uniprot ID	P24063
Gene ID	16408
Background	CD11a is a 180 kD glycoprotein, also known as α L integrin, LFA-1 α , Ly-15, or Ly-21. It is a member of the integrin family, primarily expressed on lymphocytes, monocytes/macrophages, and granulocytes. In association with CD18, the CD11a/CD18 complex forms LFA-1. CD11a plays an important role in intercellular adhesion and costimulation by binding its ligands, ICAM-1 (CD54), ICAM-2 (CD102), and ICAM-3 (CD50).

Product Details

Form	Liquid
Concentration	0.2 mg/mL
Size	25 μ g/100 μ g
Clone No.	FD441.8
Host	Rat
Isotype	Rat IgG2b, κ
Reactivity	Mouse
Application	FCM
Isotype Control	PE/Elab Fluor® 594 Rat IgG2b, κ Isotype Control[LTF-2] [Product E-AB-F09843P]
Storage Buffer	Phosphate buffered solution, pH 7.2, containing 0.09% stabilizer and 1% protein protectant.
Shipping	Biological ice pack at 4 °C
Stability & Storage	Keep as concentrated solution. Store at 2~8°C and protected from prolonged exposure to light. Do not freeze. This product is guaranteed up to one year from purchase.

For Research Use Only

Fluorophore

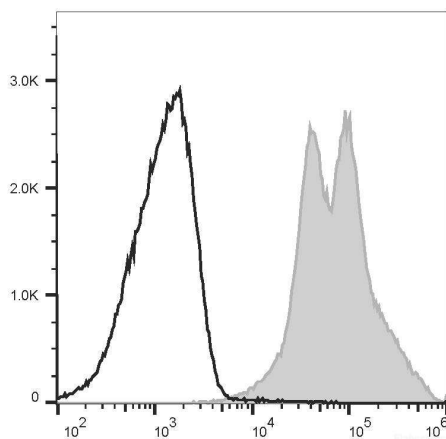
Conjugation: PE/Elab Fluor® 594

PE/Elab Fluor® 594 is designed to be excited by the blue (488 nm), Green (532 nm) and yellow-green (561 nm) lasers and detected using an optical filter centered near 620 nm (e.g., a 610/20 nm bandpass filter).

Recommended usage

Each lot of this antibody is quality control tested by flow cytometric analysis. Please check your vial before the experiment. Since applications vary, the appropriate dilutions must be determined for individual use. We suggest each investigator should titrate the reagent to obtain optimal results [The recommended concentration is 0.1-1 µg/10⁶ cells in 100 µL volume].

Product data



C57BL/6 murine splenocytes are stained with PE/Elab Fluor® 594 Anti-Mouse CD11a Antibody[FD441.8] (filled gray histogram) or PE/Elab Fluor® 594 Rat IgG2b, κ Isotype Control (empty black histogram).

Related Information

1. Sample Preparation for Flow Cytometry <https://www.elabscience.com/List-detail-5594.html>
2. Staining Cell Surface Targets for Flow Cytometry <https://www.elabscience.com/List-detail-5568.html>
3. Flow Cytometry Troubleshooting Tips <https://www.elabscience.com/List-detail-5593.html>
4. How to select the appropriate detection channel through the spectrogram? <https://www.elabscience.com/List-detail-459742.html>