

**PE/Elab Fluor® 594 Anti-Mouse CD25 Antibody[PC-61.5.3]**

|                    |  |                     |       |
|--------------------|--|---------------------|-------|
| <b>Catalog No.</b> | E-AB-F1102UP                               | <b>Reactivity</b>   | Mouse |
| <b>Storage</b>     | Store at 2~8°C, Avoid freeze / thaw cycles | <b>Applications</b> | FCM   |

**Important Note:** Centrifuge before opening to ensure complete recovery of vial contents.

**Antigen Information**

|                        |   |
|------------------------|---|
| <b>Alternate Names</b> | Interleukin-2 receptor subunit alpha,IL2RA,IL-2 receptor subunit alpha,IL-2-RA,IL-2R subunit alpha,IL2-RA,TAC antigen,p55,p55   |
| <b>Uniprot ID</b>      | P01590  |
| <b>Gene ID</b>         | 16184   |
| <b>Background</b>      | CD25 is a 55 kD glycoprotein, also known as the low affinity IL-2R $\alpha$ , Ly-43, p55, or Tac. It is expressed on activated T and B cells, thymocyte subset, pre-B cells, and T regulatory cells. In association with CD122 (IL-2R $\beta$ ) and CD132(common $\gamma$ chain), CD25 forms the high affinity signaling IL-2 receptor. |

**Product Details**

|                                |  |
|--------------------------------|--|
| <b>Form</b>                    | Liquid   |
| <b>Concentration</b>           | 0.2 mg/mL  |
| <b>Size</b>                    | 25 $\mu$ g/100 $\mu$ g   |
| <b>Clone No.</b>               | PC-61.5.3  |
| <b>Host</b>                    | Rat  |
| <b>Isotype</b>                 | Rat IgG1, $\kappa$   |
| <b>Reactivity</b>              | Mouse  |
| <b>Application</b>             | FCM  |
| <b>Isotype Control</b>         | <a href="#">PE/Elab Fluor® 594 Rat IgG1, <math>\kappa</math> Isotype Control[HRPN] [Product E-AB-F09823P]</a>  |
| <b>Storage Buffer</b>          | Phosphate buffered solution, pH 7.2, containing 0.09% stabilizer and 1% protein protectant.  |
| <b>Shipping</b>                | Biological ice pack at 4 °C  |
| <b>Stability &amp; Storage</b> | Keep as concentrated solution.<br>Store at 2~8°C and protected from prolonged exposure to light.Do not freeze.<br>This product is guaranteed up to one year from purchase. |

## Fluorophore

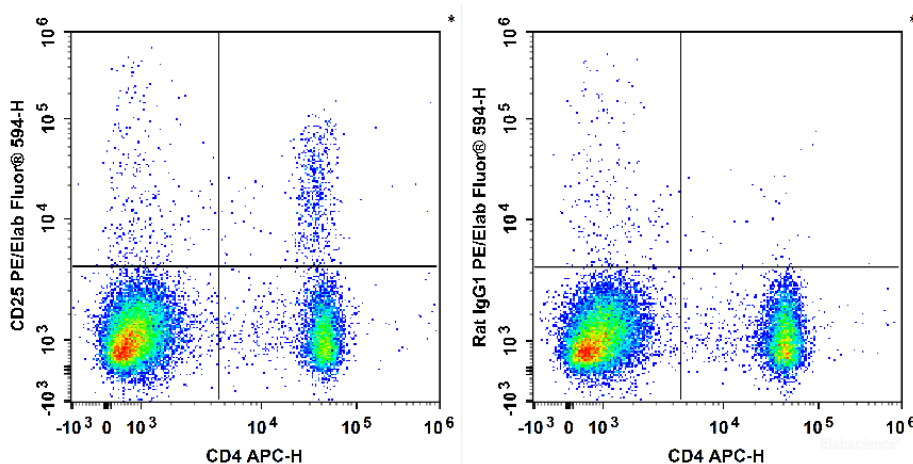
**Conjugation:** PE/Elab Fluor® 594

PE/Elab Fluor® 594 is designed to be excited by the blue (488 nm), Green (532 nm) and yellow-green (561 nm) lasers and detected using an optical filter centered near 620 nm (e.g., a 610/20 nm bandpass filter).

## Recommended usage

Each lot of this antibody is quality control tested by flow cytometric analysis. Please check your vial before the experiment. Since applications vary, the appropriate dilutions must be determined for individual use. We suggest each investigator should titrate the reagent to obtain optimal results [The recommended concentration is 0.1-1 µg/10<sup>6</sup> cells in 100 µL volume].

## Product data



C57BL/6 murine splenocytes are stained with APC Anti-Mouse CD4 Antibody and PE/Elab Fluor® 594 Anti-Mouse CD25 Antibody[PC-61.5.3] (Left). Splenocytes are stained with APC Anti-Mouse CD4 Antibody and PE/Elab Fluor® 594 Rat IgG1, κ Isotype Control (Right).

## Related Information

1. Sample Preparation for Flow Cytometry <https://www.elabscience.com/List-detail-5594.html>
2. Staining Cell Surface Targets for Flow Cytometry <https://www.elabscience.com/List-detail-5568.html>
3. Flow Cytometry Troubleshooting Tips <https://www.elabscience.com/List-detail-5593.html>
4. How to select the appropriate detection channel through the spectrogram? <https://www.elabscience.com/List-detail-459742.html>