

PE/Elab Fluor® 594 Anti-Mouse TER-119 Antibody[TER-119]

| | | | |
|--------------------|--|---------------------|-------|
| Catalog No. | E-AB-F1125P | Reactivity | Mouse |
| Storage | Store at 2~8°C, Avoid freeze / thaw cycles | Applications | FCM |

Important Note: Centrifuge before opening to ensure complete recovery of vial contents.

Antigen Information

| | |
|------------------------|---|
| Alternate Names | Ly-76,Lymphocyte antigen 76,TER119 |
| Gene ID | 104231 |
| Background | The TER-119 antigen is a 52 kD glycoporphin A-associated protein, also known as Ly-76. TER-119 is an erythroid-specific antigen expressed on early proerythroblasts to mature erythrocytes, but not on erythroid colony-forming cells (BFU-E, blast-forming unit erythroid, or CFU-E, colony-forming unit erythroid). |

Product Details

| | |
|--------------------------------|--|
| Form | Liquid |
| Size | 50Tests/100Tests/100Tests×2 |
| Clone No. | TER-119 |
| Host | Rat |
| Isotype | Rat IgG2b, κ |
| Reactivity | Mouse |
| Application | FCM |
| Isotype Control | PE/Elab Fluor® 594 Rat IgG2b, κ Isotype Control[LTF-2] [Product E-AB-F09842P] |
| Storage Buffer | Phosphate buffered solution, pH 7.2, containing 0.09% stabilizer and 1% protein protectant. |
| Shipping | Biological ice pack at 4 °C |
| Stability & Storage | Keep as concentrated solution. Store at 2~8°C and protected from prolonged exposure to light.Do not freeze. This product is guaranteed up to one year from purchase. |

Fluorophore

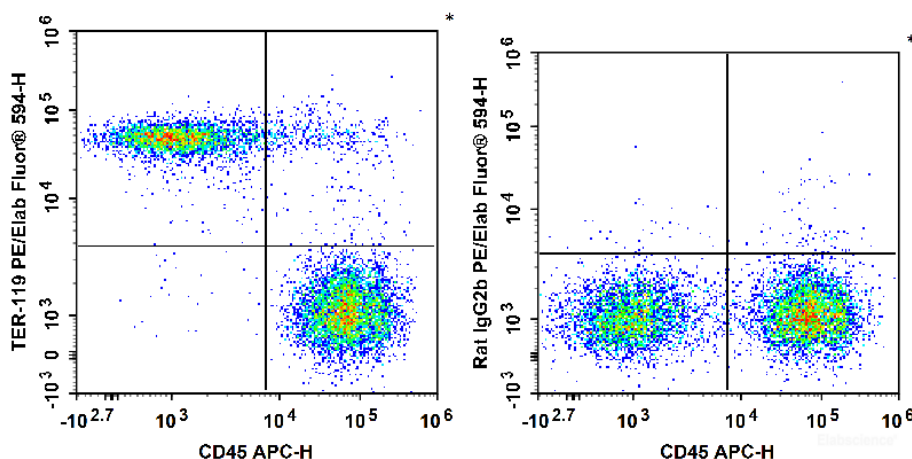
Conjugation: PE/Elab Fluor® 594

PE/Elab Fluor® 594 is designed to be excited by the blue (488 nm), Green (532 nm) and yellow-green (561 nm) lasers and detected using an optical filter centered near 620 nm (e.g., a 610/20 nm bandpass filter).

Recommended usage

Each lot of this antibody is quality control tested by flow cytometric analysis. **The amount of the reagent is suggested to be used 5 µL of antibody per test (million cells in 100 µL staining volume or per 100 µL of whole blood).** Please check your vial before the experiment. Since applications vary, the appropriate dilutions must be determined for individual use.

Product data



C57BL/6 murine bone marrow cells are stained with APC Anti-Mouse CD45 Antibody and PE/Elab Fluor® 594 Anti-Mouse TER-119 Antibody (Left). Bone marrow cells are stained with APC Anti-Mouse CD45 Antibody and PE/Elab Fluor® 594 Rat IgG2b, κ Isotype Control (Right).

Related Information

1. Sample Preparation for Flow Cytometry <https://www.elabscience.com/List-detail-5594.html>
2. Staining Cell Surface Targets for Flow Cytometry <https://www.elabscience.com/List-detail-5568.html>
3. Flow Cytometry Troubleshooting Tips <https://www.elabscience.com/List-detail-5593.html>
4. How to select the appropriate detection channel through the spectrogram? <https://www.elabscience.com/List-detail-459742.html>