

Elab Fluor® 647 Anti-Mouse Perforin Antibody[S16009A]

Catalog No.	E-AB-F1294M	Reactivity	Mouse
Storage	Store at 2~8°C, Avoid freeze / thaw cycles	Applications	ICFCM

Important Note: Centrifuge before opening to ensure complete recovery of vial contents.

Antigen Information

Alternate Names	Prf1, Pfp, Pfn, Pfn-1, Cytolysin, Lymphocyte pore-forming protein
Uniprot ID	P10820
Gene ID	18646
Background	Perforin is a 70 kD cytolytic protein that is expressed in the cytoplasmic granules of cytotoxic T lymphocytes (CTLs) and natural killer (NK) cells. Perforin is one of the major effector molecules used by cytotoxic T cells and NK cells to mediate targeted cell lysis.

Product Details

Form	Liquid
Size	50Tests/100Tests/100Tests×2
Clone No.	S16009A
Host	Rat
Isotype	Rat IgG2a, κ
Reactivity	Mouse
Application	ICFCM
Isotype Control	Elab Fluor® 647 Rat IgG2a, κ Isotype Control[2A3] [Product E-AB-F09832M]
Storage Buffer	Phosphate buffered solution, pH 7.2, containing 0.09% stabilizer and 1% protein protectant.
Shipping	Biological ice pack at 4 °C
Stability & Storage	Keep as concentrated solution. Store at 2~8°C and protected from prolonged exposure to light. Do not freeze. This product is guaranteed up to one year from purchase.

For Research Use Only

Fluorophore

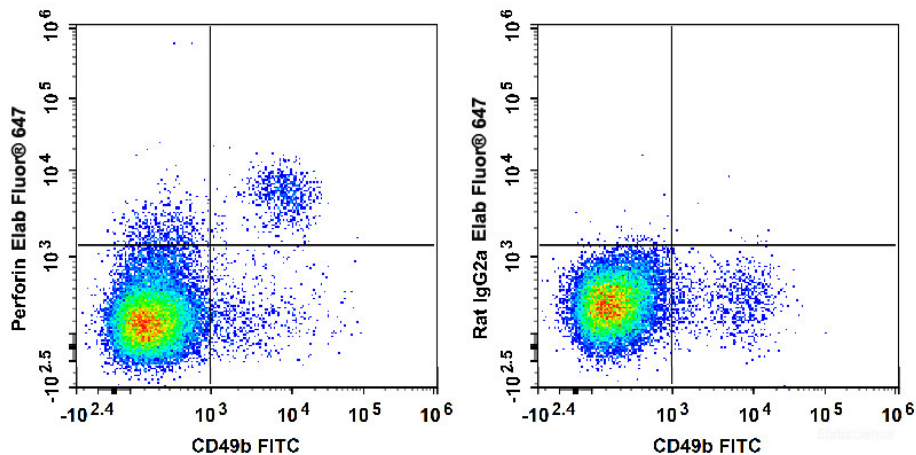
Conjugation: Elab Fluor® 647

Elab Fluor® 647 is designed to be excited by the Red laser (627-640 nm) and detected using an optical filter centered near 670 nm (e.g., a 660/20 nm bandpass filter).

Recommended usage

Each lot of this antibody is quality control tested by flow cytometric analysis. **The amount of the reagent is suggested to be used 5 µL of antibody per test (million cells in 100 µL staining volume or per 100 µL of whole blood).** Please check your vial before the experiment. Since applications vary, the appropriate dilutions must be determined for individual use.

Product data



C57BL/6 murine splenocytes are stained with FITC Anti-Mouse CD49b Antibody and Elab Fluor® 647 Anti-Mouse Perforin Antibody (Left). Splenocytes are stained with FITC Anti-Mouse CD49b Antibody and Elab Fluor® 647 Rat IgG2a, κ Isotype Control (Right).

Related Information

1. Sample Preparation for Flow Cytometry <https://www.elabscience.com/List-detail-5594.html>
2. Staining Cell Surface Targets for Flow Cytometry <https://www.elabscience.com/List-detail-5568.html>
3. Flow Cytometry Troubleshooting Tips <https://www.elabscience.com/List-detail-5593.html>
4. How to select the appropriate detection channel through the spectrogram? <https://www.elabscience.com/List-detail-459742.html>

For Research Use Only