

Recombinant EGFR Monoclonal Antibody

Catalog Number:E-AB-81439



Note: Centrifuge before opening to ensure complete recovery of vial contents.

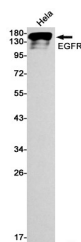
Description

Reactivity	Human,Mouse
Immunogen	A synthetic peptide of human EGFR
Host	Rabbit
Isotype	IgG
Clone	R03-6B1
Purification	Affinity Purified
Conjugation	Unconjugated
Formulation	50mM Tris-Glycine(pH 7.4), 0.15M NaCl, 40% Glycerol, 0.01% Sodium azide and 0.05% protective protein

Applications Recommended Dilution

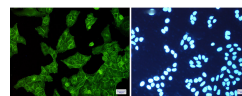
WB	1:1000-1:2000
IF	1:50-1:200

Data



Western blot detection of EGFR in HeLa cell lysates using EGFR Rabbit mAb(1:1000 diluted).Predicted band size:134kDa.Observed band size:175kDa.

Observed Mw:175kDa
Calculated Mw:134kDa



Immunofluorescence of EGFR(green) in HeLa cells using EGFR Rabbit mAb at dilution 1:200, and DAPI(blue)

Preparation & Storage

Storage Store at -20°C. Avoid freeze / thaw cycles.

Background

EGFR,also named as ERBB1,is a cell-surface receptor for members of the epidermal growth factor family (EGF-family) of extracellular protein ligands. Binding of the protein to a ligand induces receptor dimerization and tyrosine autophosphorylation and leads to cell proliferation. The gene resides on chromosome 7p12,encoding a 170 kDa membrane-associated glycoprotein. Recent studies have shown EGFR plays a critical role in cancer development and progression,including cell proliferation,apoptosis,angiogenesis,and metastatic spread. Mutations in this gene are associated with lung cancer.

For Research Use Only

A Reliable Research Partner in Life Science and Medicine

Toll-free: 1-888-852-8623

Web: www.elabscience.com

Tel: 1-832-243-6086

Email: techsupport@elabscience.com

Fax: 1-832-243-6017