

Recombinant GSK3 beta Monoclonal Antibody

Catalog Number:E-AB-81450



Note: Centrifuge before opening to ensure complete recovery of vial contents.

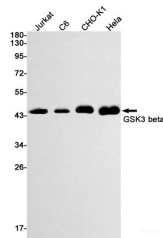
Description

Reactivity	Human,Rat,Hamster
Immunogen	A synthetic peptide of human GSK3 beta
Host	Rabbit
Isotype	IgG
Clone	R09-7G8
Purification	Affinity Purified
Conjugation	Unconjugated
Formulation	50mM Tris-Glycine(pH 7.4), 0.15M NaCl, 40% Glycerol, 0.01% Sodium azide and 0.05% protective protein

Applications Recommended Dilution

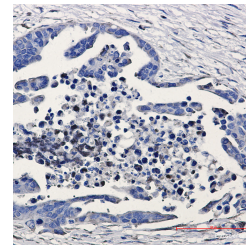
WB 1:1000-1:2000

Data



Western blot detection of GSK3 beta in Jurkat,C6,CHO-K1,HeLa cell lysates using GSK3 beta Rabbit mAb(1:1000 diluted).Predicted band size:47kDa.Observed band size:47kDa.

Observed Mw:47kDa
Calculated Mw:47kDa



Immunohistochemistry of GSK3 beta in paraffin-embedded Human Cholangiocarcinoma using GSK3 beta Rabbit mAb at dilution 1:20

Preparation & Storage

Storage Store at -20°C. Avoid freeze / thaw cycles.

Background

The protein encoded by this gene is a serine-threonine kinase belonging to the glycogen synthase kinase subfamily. It is a negative regulator of glucose homeostasis and is involved in energy metabolism, inflammation, ER-stress, mitochondrial dysfunction, and apoptotic pathways. Defects in this gene have been associated with Parkinson disease and Alzheimer disease.

For Research Use Only

A Reliable Research Partner in Life Science and Medicine

Toll-free: 1-888-852-8623

Web: www.elabscience.com

Tel: 1-832-243-6086

Email: techsupport@elabscience.com

Fax: 1-832-243-6017