

Recombinant CD31 Monoclonal Antibody

Catalog Number:E-AB-81462



Note: Centrifuge before opening to ensure complete recovery of vial contents.

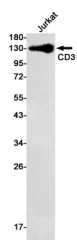
Description

Reactivity	Human
Immunogen	A synthetic peptide of human CD31
Host	Rabbit
Isotype	IgG
Clone	R07-6A1
Purification	Affinity Purified
Conjugation	Unconjugated
Formulation	50mM Tris-Glycine(pH 7.4), 0.15M NaCl, 40% Glycerol, 0.01% Sodium azide and 0.05% protective protein

Applications Recommended Dilution

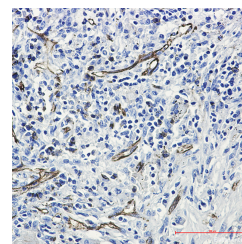
WB	1:1000-1:5000
IHC	1:20-1:100

Data



Western blot detection of CD31 in Jurkat cell lysates using CD31 Rabbit mAb(1:500 diluted).Predicted band size:83kDa.Observed band size:130kDa.

Observed Mw:130kDa
Calculated Mw:83kDa



Immunohistochemistry of CD31 in paraffin-embedded Human lung cancer tissue using CD31 Rabbit mAb at dilution 1/50

Preparation & Storage

Storage Store at -20°C. Avoid freeze / thaw cycles.

Background

Platelet endothelial cell adhesion molecule-1 (PECAM-1,CD31) is a member of the immunoglobulin gene superfamily of cell adhesion molecules. It is highly expressed on the surface of the endothelium,making up a large portion of its intracellular junctions. PECAM-1 is also present on the surface of hematopoietic cells and immune cells including platelets,monocytes,neutrophils,natural killer cells,megakaryocytes and some types of T-cell . As well as its role in cell-cell adhesion,PECAM-1 functions as a signaling receptor,and is involved in important physiological events such as nitric oxide production,regulation of T-cell immunity and tolerance,leukocyte transendothelial migration and inflammation and angiogenesis .

For Research Use Only

A Reliable Research Partner in Life Science and Medicine

Toll-free: 1-888-852-8623

Web: www.elabscience.com

Tel: 1-832-243-6086

Email: techsupport@elabscience.com

Fax: 1-832-243-6017