

Recombinant delta 1 Catenin Monoclonal Antibody

Catalog Number:E-AB-81465



Note: Centrifuge before opening to ensure complete recovery of vial contents.

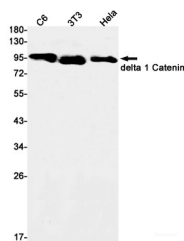
Description

Reactivity	Human,Mouse
Immunogen	A synthetic peptide of human delta 1 Catenin
Host	Rabbit
Isotype	IgG
Clone	R01-4G3
Purification	Affinity Purified
Conjugation	Unconjugated
Formulation	50mM Tris-Glycine(pH 7.4), 0.15M NaCl, 40% Glycerol, 0.01% Sodium azide and 0.05% protective protein

Applications Recommended Dilution

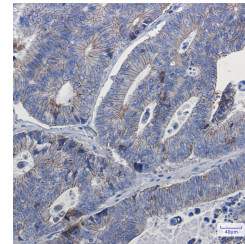
WB	1:1000-1:2000
IHC	1:50-1:100

Data



Western blot detection of delta 1 Catenin in C6,3T3,Hela cell lysates using delta 1 Catenin Rabbit mAb(1:1000 diluted).Predicted band size:108kDa.Observed band size:108kDa.

Observed Mw:108kDa
Calculated Mw:108kDa



Immunohistochemistry of delta 1 Catenin in paraffin-embedded Human colon cancer tissue using delta 1 Catenin Rabbit mAb at dilution 1:50

Preparation & Storage

Storage Store at -20°C. Avoid freeze / thaw cycles.

Background

This gene encodes a member of the Armadillo protein family, which function in adhesion between cells and signal transduction. Multiple translation initiation codons and alternative splicing result in many different isoforms being translated. Not all of the full-length nature of the described transcript variants have been determined. Read-through transcription also exists between this gene and the neighboring upstream thioredoxin-related transmembrane protein 2 (TMX2) gene.

For Research Use Only

A Reliable Research Partner in Life Science and Medicine

Toll-free: 1-888-852-8623

Web: www.elabscience.com

Tel: 1-832-243-6086

Email: techsupport@elabscience.com

Fax: 1-832-243-6017