

# Recombinant RKIP Monoclonal Antibody

Catalog Number:E-AB-81484



**Note:** Centrifuge before opening to ensure complete recovery of vial contents.

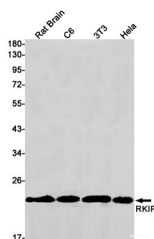
## Description

|                     |  |
|---------------------|--|
| <b>Reactivity</b>   | Human,Mouse,Rat  |
| <b>Immunogen</b>    | A synthetic peptide of human RKIP  |
| <b>Host</b>         | Rabbit   |
| <b>Isotype</b>      | IgG  |
| <b>Clone</b>        | R09-4C5  |
| <b>Purification</b> | Affinity Purified  |
| <b>Conjugation</b>  | Unconjugated   |
| <b>Formulation</b>  | 50mM Tris-Glycine(pH 7.4), 0.15M NaCl, 40% Glycerol, 0.01% Sodium azide and 0.05% protective protein |

## Applications Recommended Dilution

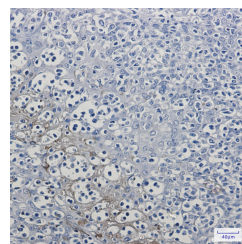
|            |               |
|------------|---------------|
| <b>WB</b>  | 1:1000-1:2000 |
| <b>IHC</b> | 1:50-1:100    |

## Data



Western blot detection of RKIP in Rat Brain,C6,3T3,Hela cell lysates using RKIP Rabbit mAb(1:1000 diluted).Predicted band size:40kDa.Observed band size:40kDa.

**Observed Mw:40kDa**  
**Calculated Mw:40kDa**



Immunohistochemistry of RKIP in paraffin-embedded Human tonsil using RKIP Rabbit mAb at dilution 1:50

## Preparation & Storage

**Storage** Store at -20°C. Avoid freeze / thaw cycles.

## Background

Raf kinase inhibitor protein (RKIP),also termed phosphatidylethanolamine binding protein PEBP1,was initially identified as a potent inhibitor of Raf-1/MEK/ERK,NF-kB,and G-protein-coupled receptor signaling pathways. Later RKIP has been further identified as a metastasis suppressor and its loss of expression has been reported in various cancers. Its expression has been proposed as a prognostic marker for patients diagnosed with the above cancers.

## For Research Use Only

A Reliable Research Partner in Life Science and Medicine

Toll-free: 1-888-852-8623

Web: [www.elabscience.com](http://www.elabscience.com)

Tel: 1-832-243-6086

Email: [techsupport@elabscience.com](mailto:techsupport@elabscience.com)

Fax: 1-832-243-6017