

Recombinant TOMM20 Monoclonal Antibody

Catalog Number:E-AB-81488



Note: Centrifuge before opening to ensure complete recovery of vial contents.

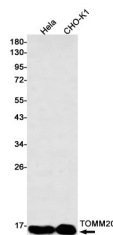
Description

Reactivity	Human,Hamster
Immunogen	Recombinant protein of human TOMM20
Host	Rabbit
Isotype	IgG
Clone	R03-7F6
Purification	Affinity Purified
Conjugation	Unconjugated
Formulation	50mM Tris-Glycine(pH 7.4), 0.15M NaCl, 40% Glycerol, 0.01% Sodium azide and 0.05% protective protein

Applications Recommended Dilution

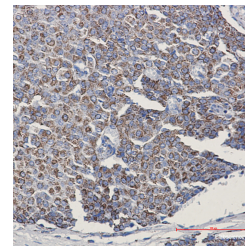
WB	1:1000-1:2000
IHC	1:50-1:100
IF	1:50-1:100

Data

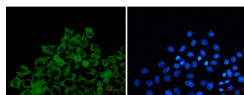


Western blot detection of TOMM20 in HeLa,CHO-K1 cell lysates using TOMM20 Rabbit mAb(1:500 diluted).Predicted band size:16kDa.Observed band size:16kDa.

Observed Mw:16kDa
Calculated Mw:16kDa



Immunohistochemistry of TOMM20 in paraffin-embedded Human breast cancer tissue using TOMM20 Rabbit mAb at dilution 1:50



Immunofluorescence of TOMM2 (green) in HeLa using TOMM2 Rabbit mAb at dilution 1:50, and DAPI(blue)

Preparation & Storage

For Research Use Only

A Reliable Research Partner in Life Science and Medicine

Toll-free: 1-888-852-8623

Web: www.elabscience.com

Tel: 1-832-243-6086

Email: techsupport@elabscience.com

Fax: 1-832-243-6017

Recombinant TOMM20 Monoclonal Antibody

Catalog Number:E-AB-81488



Storage Store at -20°C. Avoid freeze / thaw cycles.

Background

TOMM20 (Translocase Of Outer Mitochondrial Membrane 20) is a Protein Coding gene. Diseases associated with TOMM20 include Perry Syndrome and Infantile Neuroaxonal Dystrophy 1. Among its related pathways are Deubiquitination and Neuroscience. GO annotations related to this gene include unfolded protein binding and P-P-bond-hydrolysis-driven protein transmembrane transporter activity. An important paralog of this gene is TOMM20L.

For Research Use Only

A Reliable Research Partner in Life Science and Medicine

Toll-free: 1-888-852-8623

Tel: 1-832-243-6086

Fax: 1-832-243-6017

Web: www.elabscience.com

Email: techsupport@elabscience.com