

# Recombinant TRIM25 Monoclonal Antibody

Catalog Number:E-AB-81492



**Note:** Centrifuge before opening to ensure complete recovery of vial contents.

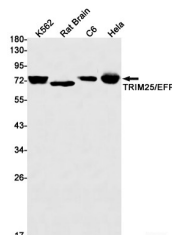
## Description

<b>Reactivity</b>	Human,Rat
<b>Immunogen</b>	A synthetic peptide of human TRIM25
<b>Host</b>	Rabbit
<b>Isotype</b>	IgG
<b>Clone</b>	R06-1H2
<b>Purification</b>	Affinity Purified
<b>Conjugation</b>	Unconjugated
<b>Formulation</b>	50mM Tris-Glycine(pH 7.4), 0.15M NaCl, 40% Glycerol, 0.01% Sodium azide and 0.05% protective protein

## Applications Recommended Dilution

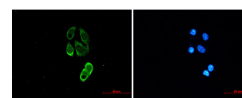
<b>WB</b>	1:1000-1:5000
<b>IF</b>	1:20-1:100

## Data



Western blot detection of TRIM25/EFP in K562,Rat Brain,C6,HeLa cell lysates using TRIM25/EFP Rabbit mAb(1:1000 diluted).Predicted band size:71kDa.Observed band size:71kDa.

**Observed Mw:71kDa**  
**Calculated Mw:71kDa**



Immunofluorescence of TRIM25/EFP (green) in MCF-7 using TRIM25/EFP antibody at dilution 1:20, and DAPI(blue)

## Preparation & Storage

**Storage** Store at -20°C. Avoid freeze / thaw cycles.

## Background

The protein encoded by this gene is a member of the tripartite motif (TRIM) family. The TRIM motif includes three zinc-binding domains, a RING, a B-box type 1 and a B-box type 2, and a coiled-coil region. The protein localizes to the cytoplasm. The presence of potential DNA-binding and dimerization-transactivation domains suggests that this protein may act as a transcription factor, similar to several other members of the TRIM family. Expression of the gene is upregulated in response to estrogen, and it is thought to mediate estrogen actions in breast cancer as a primary response gene.

## For Research Use Only

A Reliable Research Partner in Life Science and Medicine

Toll-free: 1-888-852-8623

Web: [www.elabscience.com](http://www.elabscience.com)

Tel: 1-832-243-6086

Email: [techsupport@elabscience.com](mailto:techsupport@elabscience.com)

Fax: 1-832-243-6017