

Recombinant Vinculin Monoclonal Antibody

Catalog Number:E-AB-81494



Note: Centrifuge before opening to ensure complete recovery of vial contents.

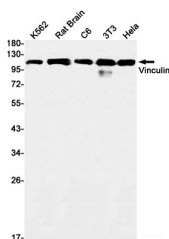
Description

Reactivity	Human,Mouse,Rat
Immunogen	A synthetic peptide of human Vinculin
Host	Rabbit
Isotype	IgG
Clone	R04-8F9
Purification	Affinity Purified
Conjugation	Unconjugated
Formulation	50mM Tris-Glycine(pH 7.4), 0.15M NaCl, 40% Glycerol, 0.01% Sodium azide and 0.05% protective protein

Applications Recommended Dilution

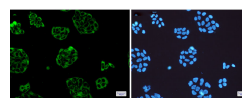
WB	1:1000-1:2000
IF	1:50-1:100

Data



Western blot detection of Vinculin in K562,Rat Brain,C6,3T3,Hela cell lysates using Vinculin Rabbit mAb(1:1000 diluted).Predicted band size:124kDa.Observed band size:124kDa.

Observed Mw:124kDa
Calculated Mw:124kDa



Immunofluorescence of Vinculin(green) in Hela cells using Vinculin Rabbit mAb at dilution 1:50, and DAPI(blue)

Preparation & Storage

Storage Store at -20°C. Avoid freeze / thaw cycles.

Background

Vinculin belongs to the vinculin/alpha-catenin family. It is an actin filament (F-actin)-binding protein which involved in cell-matrix adhesion and cell-cell adhesion. Vinculin is a cytoskeletal protein associated with cell-cell and cell-matrix junctions. Vinculin regulates cell-surface E-cadherin expression and potentiates mechanosensing by the E-cadherin complex. It plays an important role in cell morphology and locomotion.

For Research Use Only

A Reliable Research Partner in Life Science and Medicine

Toll-free: 1-888-852-8623

Web: www.elabscience.com

Tel: 1-832-243-6086

Email: techsupport@elabscience.com

Fax: 1-832-243-6017