

Recombinant CCT2 Monoclonal Antibody

Catalog Number:E-AB-81498



Note: Centrifuge before opening to ensure complete recovery of vial contents.

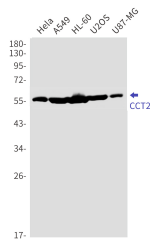
Description

Reactivity	Human,Mouse,Rat
Immunogen	A synthetic peptide of human CCT2
Host	Rabbit
Isotype	IgG
Clone	R07-6C2
Purification	Affinity Purified
Conjugation	Unconjugated
Formulation	50mM Tris-Glycine(pH 7.4), 0.15M NaCl, 40% Glycerol, 0.01% Sodium azide and 0.05% protective protein

Applications Recommended Dilution

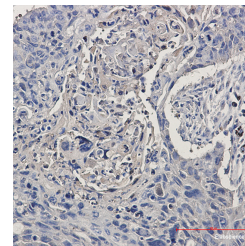
WB	1:1000-1:2000
IHC	1:50-1:100
IF	1:50-1:100

Data

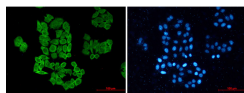


Western blot detection of CCT2 in HeLa,A549,HL-60,U2OS,U87-MG cell lysates using CCT2 Rabbit mAb(1:1000 diluted).Predicted band size:57kDa.Observed band size:57kDa.

Observed Mw:57kDa
Calculated Mw:57kDa



Immunohistochemistry of CCT2 in paraffin-embedded Human lung cancer tissue using CCT2 Rabbit mAb at dilution 1:50



Immunofluorescence of CCT2 (green) in hela using CCT2 Rabbit mAb at dilution 1:50, and DAPI(blue)

Preparation & Storage

Storage Store at -20°C. Avoid freeze / thaw cycles.

For Research Use Only

A Reliable Research Partner in Life Science and Medicine

Toll-free: 1-888-852-8623

Web: www.elabscience.com

Tel: 1-832-243-6086

Email: techsupport@elabscience.com

Fax: 1-832-243-6017

Recombinant CCT2 Monoclonal Antibody

Catalog Number:E-AB-81498



Background

The protein encoded by this gene is a molecular chaperone that is a member of the chaperonin containing TCP1 complex (CCT), also known as the TCP1 ring complex (TRiC). This complex consists of two identical stacked rings, each containing eight different proteins. Unfolded polypeptides enter the central cavity of the complex and are folded in an ATP-dependent manner. The complex folds various proteins, including actin and tubulin. Two transcript variants encoding different isoforms have been found for this gene.

For Research Use Only

A Reliable Research Partner in Life Science and Medicine

Toll-free: 1-888-852-8623

Web: www.elabscience.com

Tel: 1-832-243-6086

Email: techsupport@elabscience.com

Fax: 1-832-243-6017