

Recombinant Cytochrome P450 2D6 Monoclonal Antibody



Catalog Number:E-AB-81500

Note: Centrifuge before opening to ensure complete recovery of vial contents.

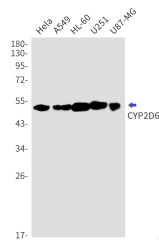
Description

Reactivity	Human
Immunogen	Recombinant protein of human CYP2D6
Host	Rabbit
Isotype	IgG
Clone	R07-3G8
Purification	Affinity Purified
Conjugation	Unconjugated
Formulation	50mM Tris-Glycine(pH 7.4), 0.15M NaCl, 40% Glycerol, 0.01% Sodium azide and 0.05% protective protein

Applications Recommended Dilution

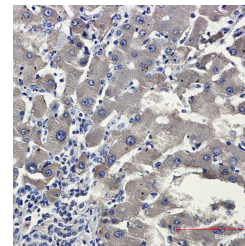
WB	1:500-1:1000
IHC	1:50-1:100
IF	1:50-1:100

Data

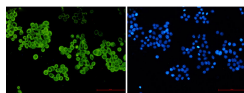


Western blot detection of CYP2D6 in HeLa, A549, HL-60, U251, U87-MG cell lysates using CYP2D6 Rabbit mAb (1:1000 diluted). Predicted band size: 56 kDa. Observed band size: 50 kDa.

Observed Mw: 50 kDa
Calculated Mw: 56 kDa



Immunohistochemistry of CYP2D6 in paraffin-embedded liver cancer tissue using CYP2D6 Rabbit mAb at dilution 1:50



Immunofluorescence of CYP2D6 (green) in HeLa using CYP2D6 Rabbit mAb at dilution 1:50, and DAPI (blue)

Preparation & Storage

For Research Use Only

A Reliable Research Partner in Life Science and Medicine

Toll-free: 1-888-852-8623

Web: www.elabscience.com

Tel: 1-832-243-6086

Email: techsupport@elabscience.com

Fax: 1-832-243-6017

Recombinant Cytochrome P450 2D6 Monoclonal Antibody

Catalog Number:E-AB-81500



Storage Store at -20°C. Avoid freeze / thaw cycles.

Background

CYP2D6(Cytochrome P450 2D6) is also named as CYP2DL1 and belongs to the cytochrome P450 family. It is a monooxygenase that involved in the metabolism of drugs such as antiarrhythmics,adrenoceptor antagonists,and tricyclic antidepressants. CYP2D6 is responsible for the metabolism of many drugs and environmental chemicals that it oxidizes. It has 2 isoforms produced by alternative splicing with the molecular weight of 56 kDa and 50 kDa.

For Research Use Only

A Reliable Research Partner in Life Science and Medicine

Toll-free: 1-888-852-8623

Web: www.elabscience.com

Tel: 1-832-243-6086

Email: techsupport@elabscience.com

Fax: 1-832-243-6017