

# Recombinant LINE 1 ORF1p Monoclonal Antibody

Catalog Number:E-AB-81506



**Note:** Centrifuge before opening to ensure complete recovery of vial contents.

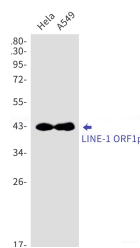
## Description

<b>Reactivity</b>	Human
<b>Immunogen</b>	Recombinant protein of human LINE-1 ORF1p
<b>Host</b>	Rabbit
<b>Isotype</b>	IgG
<b>Clone</b>	R02-2H1
<b>Purification</b>	Affinity Purified
<b>Conjugation</b>	Unconjugated
<b>Formulation</b>	50mM Tris-Glycine(pH 7.4), 0.15M NaCl, 40% Glycerol, 0.01% Sodium azide and 0.05% protective protein

## Applications Recommended Dilution

**WB** 1:500-1:1000

## Data



Western blot detection of LINE-1 ORF1p in HeLa, A549 cell lysates using LINE-1 ORF1p Rabbit mAb (1:1000 diluted). Predicted band size: 40kDa. Observed band size: 42kDa.

**Observed Mw:42kDa**  
**Calculated Mw:40kDa**

## Preparation & Storage

**Storage** Store at -20°C. Avoid freeze / thaw cycles.

## For Research Use Only

A Reliable Research Partner in Life Science and Medicine

Toll-free: 1-888-852-8623

Web: [www.elabscience.com](http://www.elabscience.com)

Tel: 1-832-243-6086

Email: [techsupport@elabscience.com](mailto:techsupport@elabscience.com)

Fax: 1-832-243-6017