

Recombinant RPS20 Monoclonal Antibody

Catalog Number:E-AB-81509



Note: Centrifuge before opening to ensure complete recovery of vial contents.

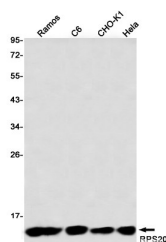
Description

Reactivity	Human,Mouse,Rat,Hamster
Immunogen	A synthetic peptide of human RPS20
Host	Rabbit
Isotype	IgG
Clone	R08-2A0
Purification	Affinity Purified
Conjugation	Unconjugated
Formulation	50mM Tris-Glycine(pH 7.4), 0.15M NaCl, 40% Glycerol, 0.01% Sodium azide and 0.05% protective protein

Applications Recommended Dilution

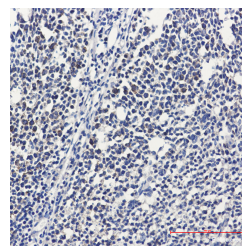
WB	1:500-1:1000
IHC	1:50-1:100

Data



Western blot detection of RPS20 in HeLa,CHO-K1,C6,Ramos using RPS20 Rabbit mAb(1:1000 diluted)

Observed Mw:13kDa
Calculated Mw:13kDa



Immunohistochemistry of RPS20 in paraffin-embedded Human tonsil using RPS20 Rabbit mAb at dilution 1:50

Preparation & Storage

Storage Store at -20°C. Avoid freeze / thaw cycles.

Background

Ribosomes, the organelles that catalyze protein synthesis, consist of a small 40S subunit and a large 60S subunit. Together these subunits are composed of 4 RNA species and approximately 80 structurally distinct proteins. This gene encodes a ribosomal protein that is a component of the 40S subunit. The protein belongs to the S10P family of ribosomal proteins. It is located in the cytoplasm. This gene is co-transcribed with the small nucleolar RNA gene U54, which is located in its second intron. As is typical for genes encoding ribosomal proteins, there are multiple processed pseudogenes of this gene dispersed through the genome. Two transcript variants encoding different isoforms have been identified for this gene.

For Research Use Only

A Reliable Research Partner in Life Science and Medicine

Toll-free: 1-888-852-8623

Web: www.elabscience.com

Tel: 1-832-243-6086

Email: techsupport@elabscience.com

Fax: 1-832-243-6017