

Recombinant YTHDC2 Monoclonal Antibody

Catalog Number:E-AB-81516



Note: Centrifuge before opening to ensure complete recovery of vial contents.

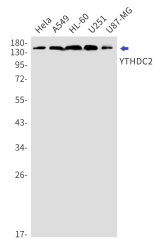
Description

Reactivity	Human
Immunogen	Recombinant protein of human YTHDC2
Host	Rabbit
Isotype	IgG
Clone	R04-7F8
Purification	Affinity Purified
Conjugation	Unconjugated
Formulation	50mM Tris-Glycine(pH 7.4), 0.15M NaCl, 40% Glycerol, 0.01% Sodium azide and 0.05% protective protein

Applications Recommended Dilution

WB 1:500-1:1000

Data



Western blot detection of YTHDC2 in HeLa, A549, HL-60, U251, U87-MG cell lysates using YTHDC2 Rabbit mAb (1:1000 diluted). Predicted band size: 160kDa. Observed band size: 160kDa.

Observed Mw:160kDa

Calculated Mw:160kDa

Preparation & Storage

Storage Store at -20°C. Avoid freeze / thaw cycles.

Background

YTHDC2, also named as Probable ATP-dependent RNA helicase YTHDC2, is a 1430 amino acid protein, which belongs to the DEAD box helicase family. YTHDC2 specifically recognizes and binds N6-methyladenosine (m6A)-containing RNAs. M6A is a modification present at internal sites of mRNAs and some non-coding RNAs and plays a role in the efficiency of mRNA splicing, processing and stability.

For Research Use Only

A Reliable Research Partner in Life Science and Medicine

Toll-free: 1-888-852-8623

Web: www.elabscience.com

Tel: 1-832-243-6086

Email: techsupport@elabscience.com

Fax: 1-832-243-6017