

# Recombinant YTHDF1 Monoclonal Antibody

Catalog Number:E-AB-81517



**Note:** Centrifuge before opening to ensure complete recovery of vial contents.

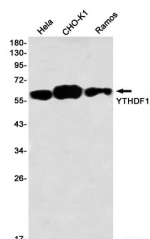
## Description

<b>Reactivity</b>	Human,Hamster
<b>Immunogen</b>	Recombinant protein of human YTHDF1
<b>Host</b>	Rabbit
<b>Isotype</b>	IgG
<b>Clone</b>	R05-2E7
<b>Purification</b>	Affinity Purified
<b>Conjugation</b>	Unconjugated
<b>Formulation</b>	50mM Tris-Glycine(pH 7.4), 0.15M NaCl, 40% Glycerol, 0.01% Sodium azide and 0.05% protective protein

## Applications Recommended Dilution

<b>WB</b>	1:1000-1:2000
-----------	---------------

## Data



Western blot detection of YTHDF1 in HeLa,CHO-K1,Ramos using YTHDF1 Rabbit mAb(1:1000 diluted)

**Observed Mw:61kDa**  
**Calculated Mw:61kDa**

## Preparation & Storage

**Storage** Store at -20°C. Avoid freeze / thaw cycles.

## Background

YTHDF1, also named as YTH domain-containing family protein 1 or C20orf21, is a 559 amino acid protein, which localizes in the cytoplasm. YTHDF1 specifically recognizes and binds N6-methyladenosine (m6A)-containing mRNAs, and promotes mRNA translation efficiency. M6A is a modification present at internal sites of mRNAs and some non-coding RNAs and plays a role in the efficiency of mRNA splicing, processing and stability. YTHDF1 acts as a regulator of mRNA translation efficiency: promotes ribosome loading to m6A-containing mRNAs and interacts with translation initiation factors eIF3 (EIF3A or EIF3B) to facilitate translation initiation. YTHDF1 exists two isoform and calculated molecular weight of isoforms are 61 kDa and 21 kDa.

## For Research Use Only

A Reliable Research Partner in Life Science and Medicine

Toll-free: 1-888-852-8623

Web: [www.elabsience.com](http://www.elabsience.com)

Tel: 1-832-243-6086

Email: [techsupport@elabsience.com](mailto:techsupport@elabsience.com)

Fax: 1-832-243-6017