

Recombinant 4E BP1 Monoclonal Antibody

Catalog Number:E-AB-81520



Note: Centrifuge before opening to ensure complete recovery of vial contents.

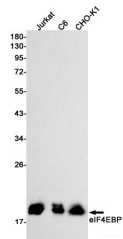
Description

Reactivity	Human,Mouse,Rat,Hamster
Immunogen	A synthetic peptide of human eIF4EBP1
Host	Rabbit
Isotype	IgG
Clone	R06-8E6
Purification	Affinity Purified
Conjugation	Unconjugated
Formulation	50mM Tris-Glycine(pH 7.4), 0.15M NaCl, 40% Glycerol, 0.01% Sodium azide and 0.05% protective protein

Applications Recommended Dilution

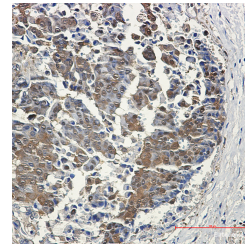
WB	1:500-1:1000
IHC	1:50-1:100

Data



Western blot detection of eIF4EBP1 in Jurkat,C6,CHO-K1 cell lysates using eIF4EBP1 Rabbit mAb(1:1000 diluted).Predicted band size:13kDa.Observed band size:15-20kDa.

Observed Mw:15/20kDa
Calculated Mw:13kDa



Immunohistochemistry of eIF4EBP1 in paraffin-embedded Human breast cancer tissue using eIF4EBP1 Rabbit mAb at dilution 1:50

Preparation & Storage

Storage Store at -20°C. Avoid freeze / thaw cycles.

Background

Eukaryotic translation initiation factor 4E-binding protein 1(4EBP1),is a member of 4EBPs family,which regulate the translation of a subset of mRNA by competing with eIF4G for binding to eIF4E,thus preventing the assembly of the eIF4F complex. The eIF4F facilitates the recruitment of other translation initiation factors to form the complex and then initiates cap-dependent translation.4EBP1 also mediates the regulation of protein translation by growth factors,hormones and other stimuli that signal through the MAP kinase and mTORC1 pathways. There are three forms of 4EBP1,alpha,beta and gamma.

For Research Use Only

A Reliable Research Partner in Life Science and Medicine

Toll-free: 1-888-852-8623

Web: www.elabscience.com

Tel: 1-832-243-6086

Email: techsupport@elabscience.com

Fax: 1-832-243-6017