

# Recombinant Bid Monoclonal Antibody

Catalog Number:E-AB-81536



**Note:** Centrifuge before opening to ensure complete recovery of vial contents.

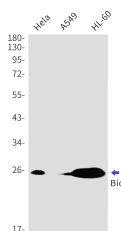
## Description

<b>Reactivity</b>	Human
<b>Immunogen</b>	A synthetic peptide of human Bid
<b>Host</b>	Rabbit
<b>Isotype</b>	IgG
<b>Clone</b>	R08-2F0
<b>Purification</b>	Affinity Purified
<b>Conjugation</b>	Unconjugated
<b>Formulation</b>	50mM Tris-Glycine(pH 7.4), 0.15M NaCl, 40% Glycerol, 0.01% Sodium azide and 0.05% protective protein

## Applications Recommended Dilution

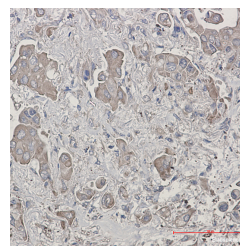
<b>WB</b>	1:500-1:1000
<b>IHC</b>	1:50-1:100

## Data



Western blot detection of Bid in HeLa,A549,HL-60 using Bid Rabbit mAb(1:1000 diluted)

**Observed Mw:22kDa**  
**Calculated Mw:22kDa**



Immunohistochemistry of Bid in paraffin-embedded liver cancer tissue using Bid Rabbit mAb at dilution 1:50

## Preparation & Storage

**Storage** Store at -20°C. Avoid freeze / thaw cycles.

## Background

BID,also named as p22 BID,can be cleaved into p11 BID,p13 BID and p15 BID. It is pro-apoptotic molecules. The major proteolytic product p15 BID allows the release of cytochrome c. BID-L,BID-EL and BID-ES induce ICE-like proteases and apoptosis. BID-S does not induce apoptosis. BID counters the protective effect of Bcl-2. .

## For Research Use Only

A Reliable Research Partner in Life Science and Medicine

Toll-free: 1-888-852-8623

Web: [www.elabscience.com](http://www.elabscience.com)

Tel: 1-832-243-6086

Email: [techsupport@elabscience.com](mailto:techsupport@elabscience.com)

Fax: 1-832-243-6017