

Recombinant c Met Monoclonal Antibody

Catalog Number:E-AB-81537



Note: Centrifuge before opening to ensure complete recovery of vial contents.

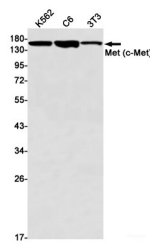
Description

Reactivity	Human,Mouse,Rat
Immunogen	A synthetic peptide of human Met (c-Met)
Host	Rabbit
Isotype	IgG
Clone	R02-4D6
Purification	Affinity Purified
Conjugation	Unconjugated
Formulation	50mM Tris-Glycine(pH 7.4), 0.15M NaCl, 40% Glycerol, 0.01% Sodium azide and 0.05% protective protein

Applications Recommended Dilution

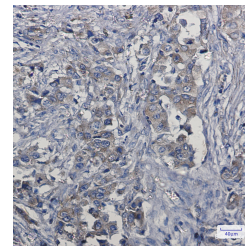
WB	1:1000-1:2000
IHC	1:20-1:50
IF	1:20-1:200

Data

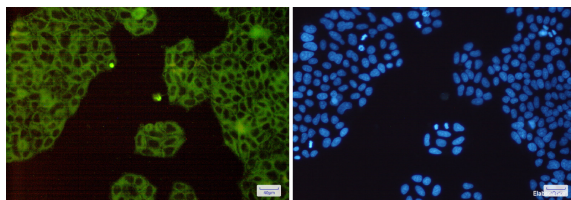


Western blot detection of Met (c-Met) in K562,C6,3T3 cell lysates using Met (c-Met) Rabbit mAb(1:1000 diluted).Predicted band size:156kDa.Observed band size:170kDa.

Observed Mw:170kDa
Calculated Mw:156kDa



Immunohistochemistry of Met (c-Met) in paraffin-embedded Human lung cancer tissue using Met (c-Met) Rabbit mAb at dilution 1:50



Immunofluorescence of Met (c-Met)(green) in HeLa cells using Met (c-Met) Rabbit mAb at dilution 1:200, and DAPI(blue)

Preparation & Storage

Storage Store at -20°C. Avoid freeze / thaw cycles.

For Research Use Only

A Reliable Research Partner in Life Science and Medicine

Toll-free: 1-888-852-8623

Web: www.elabscience.com

Tel: 1-832-243-6086

Email: techsupport@elabscience.com

Fax: 1-832-243-6017

Recombinant c Met Monoclonal Antibody

Catalog Number:E-AB-81537



Background

The proto-oncogene MET product is the hepatocyte growth factor receptor and encodes tyrosine-kinase activity. The primary single chain precursor protein is post-translationally cleaved to produce the alpha and beta subunits, which are disulfide linked to form the mature receptor. Various mutations in the MET gene are associated with papillary renal carcinoma. Two transcript variants encoding different isoforms have been found for this gene.

For Research Use Only

A Reliable Research Partner in Life Science and Medicine

Toll-free: 1-888-852-8623

Web: www.elabscience.com

Tel: 1-832-243-6086

Email: techsupport@elabscience.com

Fax: 1-832-243-6017