

# Recombinant Cyclin E2 Monoclonal Antibody

Catalog Number:E-AB-81550



**Note:** Centrifuge before opening to ensure complete recovery of vial contents.

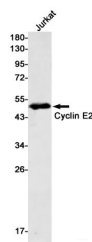
## Description

<b>Reactivity</b>	Human
<b>Immunogen</b>	A synthetic peptide of human Cyclin E2
<b>Host</b>	Rabbit
<b>Isotype</b>	IgG
<b>Clone</b>	R02-1C0
<b>Purification</b>	Affinity Purified
<b>Conjugation</b>	Unconjugated
<b>Formulation</b>	50mM Tris-Glycine(pH 7.4), 0.15M NaCl, 40% Glycerol, 0.01% Sodium azide and 0.05% protective protein

## Applications Recommended Dilution

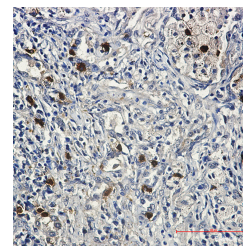
<b>WB</b>	1:500-1:1000
<b>IHC</b>	1:50-1:100
<b>IF</b>	1:20-1:100

## Data

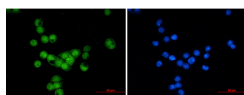


Western blot detection of Cyclin E2 in Jurkat cell lysates using Cyclin E2 Rabbit mAb(1:500 diluted).Predicted band size:47kDa.Observed band size:47kDa.

**Observed Mw:47kDa**  
**Calculated Mw:47kDa**



Immunohistochemistry of Cyclin E2 in paraffin-embedded Human lung cancer tissue using Cyclin E2 Rabbit mAb at dilution 1:50



Immunofluorescence of Cyclin E2 (green) in MCF-7 using Cyclin E2 antibody at dilution 1:20, and DAPI(blue)

## Preparation & Storage

### For Research Use Only

A Reliable Research Partner in Life Science and Medicine

Toll-free: 1-888-852-8623

Web: [www.elabscience.com](http://www.elabscience.com)

Tel: 1-832-243-6086

Email: [techsupport@elabscience.com](mailto:techsupport@elabscience.com)

Fax: 1-832-243-6017

# Recombinant Cyclin E2 Monoclonal Antibody

Catalog Number:E-AB-81550



**Storage** Store at -20°C. Avoid freeze / thaw cycles.

## Background

The protein encoded by this gene belongs to the highly conserved cyclin family, whose members are characterized by a dramatic periodicity in protein abundance through the cell cycle. Cyclins function as regulators of CDK kinases. Different cyclins exhibit distinct expression and degradation patterns which contribute to the temporal coordination of each mitotic event. This cyclin forms a complex with and functions as a regulatory subunit of CDK2. This cyclin has been shown to specifically interact with CIP/KIP family of CDK inhibitors, and plays a role in cell cycle G1/S transition.

---

## For Research Use Only

A Reliable Research Partner in Life Science and Medicine

Toll-free: 1-888-852-8623

Tel: 1-832-243-6086

Fax: 1-832-243-6017

Web: [www.elabscience.com](http://www.elabscience.com)

Email: [techsupport@elabscience.com](mailto:techsupport@elabscience.com)